

Before You Get Started Booklet

Before your child's first day at St. Anne's, there are a few key things we would like you to know. To make things easier, we have gathered them all into this handy booklet.

If you have any questions, please contact the school office.

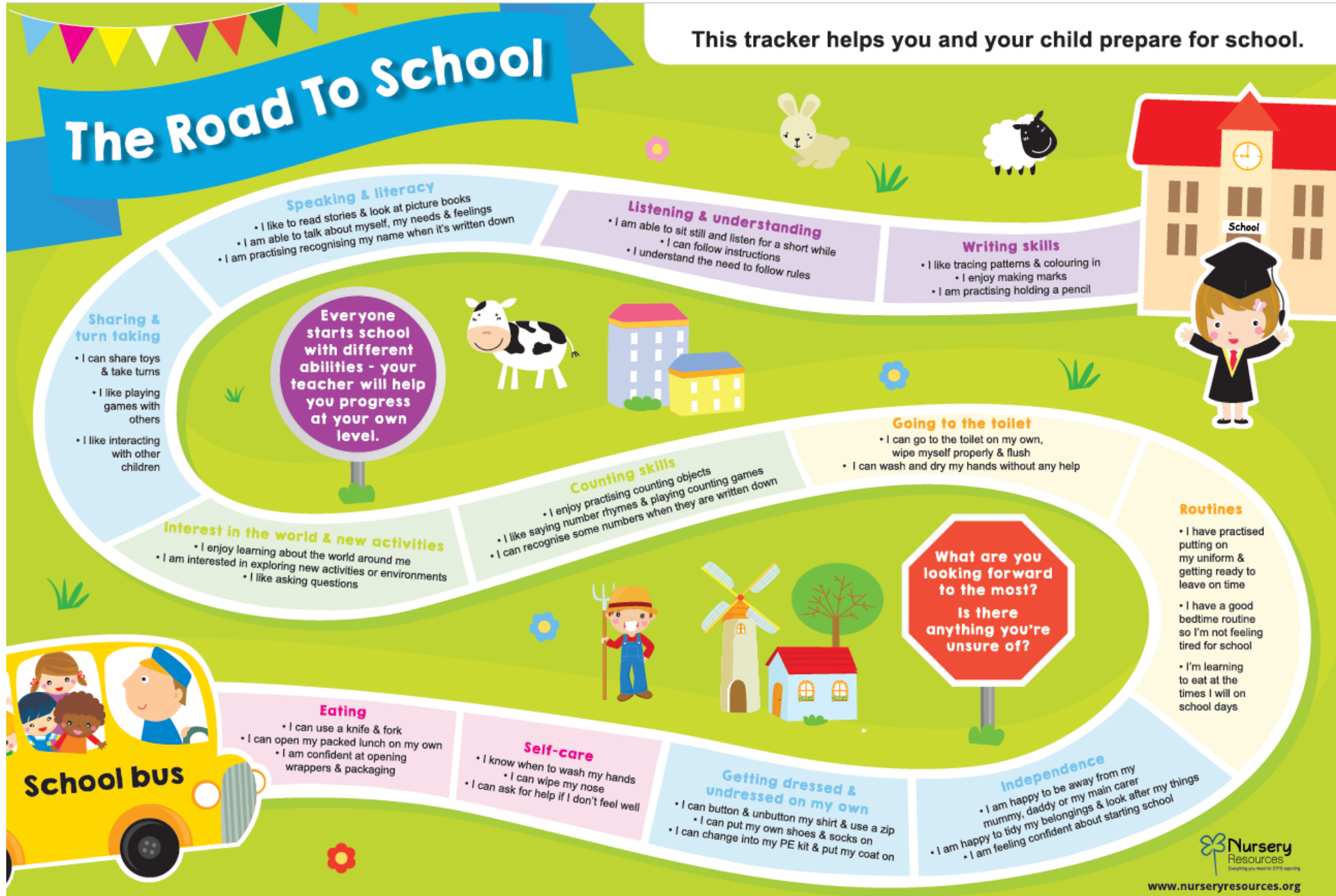


Contents

The Road to School	3
Welcome	4
Governors' Welcome	5
School Development Fund	6
The Parent Portal and Arbor App.....	7
School Meals	7
Xavier EYFS and KS1 Parent Screen Time Information	8
School Information	10
WHAT TO DO IF	10
St Anne's Holiday Dates	11
Xavier Term & Holiday Dates 2026-27	12
School Uniform for EYFS	13
Wraparound Care - Breakfast and After School Clubs.....	16
Car Parking	16
PFA	17

This tracker helps you and your child prepare for school.

The Road To School



Remember - learning is not a competition, children learn at different rates. For more ideas to help prepare your child for school, talk to your childcare practitioner.

Welcome

Dear Parents and Carers,

It is a real pleasure to welcome you and your child to our school community as you prepare to join us in September. This is such an exciting moment in your child's life, and we feel privileged to be part of the beginning of their school journey. Starting school is a milestone filled with curiosity, discovery, and new friendships, and we cannot wait to see your children grow, learn, and flourish with us.

At our school, we believe that education is most powerful when home and school work together in partnership. Your involvement, encouragement, and insights are invaluable, and we look forward to building a strong, supportive relationship with each of you. Together, we can ensure that your child feels confident, cared for, and ready to embrace every opportunity ahead.

Our school motto, inspired by St John Bosco, guides everything we do: "It is not enough to love children; they must know that they are loved." You will see this reflected in our classrooms, our routines, and our relationships. We strive to create an environment where every child feels safe, valued, and truly known —because when children feel loved, they thrive.

We are delighted to welcome you to our school family and look forward to the wonderful year ahead.

God Bless

A handwritten signature in blue ink that reads "Mrs Martin".

Mrs Martin

Headteacher

Governors' Welcome

Dear Families,

To those of you who are joining the St Anne's community for the first time, it is my great privilege to welcome you to our family. I can tell you from my own children's experience that you have made a fantastic choice of school.

To those of you who already have children at St Anne's, I am sure you will know firsthand what a wonderful community you are part of. We are delighted that you have chosen to continue your family's journey with us.

As Governors, our responsibility is to make sure that your children get the education they deserve. We work with Mrs Martin and her team to evaluate every part of the school and ensure there is a strategic plan for the school to be the best it can be.

We also work with the central team at the Xavier Catholic Education Trust to ensure that our school is part of a wider network within Catholic Education. This allows our school access to a wealth of expertise and resources in many areas, including Learning and Teaching, Safeguarding and SEND.

In our school we place great emphasis on community; we know that we will be most successful when staff, parents, governors, the Trust, the parish and, of course, the children all work in harmony. We look forward to working with you over the next seven years of your child's journey in education and faith.

God bless,

Adam Brooks
Chair of Governors

School Development Fund

At St Anne's we ask parents to contribute to our School Development Fund.

The purpose of this fund is to be able to give your child the very best educational experience!

Over the last year, here are some of the initiatives that the Governors Fund has paid for:

- Upgrading our ICT facilities to allow the children access to the most up to date digital learning
- A new prayer garden where the children can grow their spirituality
- New scooters for the playground
- New books for every reading corner
- New audio-visual equipment for the school hall to enhance the quality of the assemblies, collective worship and extracurricular opportunities

We do really appreciate that finances are tight for many households, but every small contribution will make a big difference. There are 60 children joining Reception this September, if each family could contribute £5 per month that's £300 a month, multiplied by twelve and then multiplied by seven years at the school. That means this year group could contribute £25,000! Twenty-five thousand pounds that we can promise you we will spend to enhance the opportunities and experiences of your child and every child.

The School Development Fund is a protected fund. The money will not be spent on exercise books, teachers' salaries, electricity bills or any other standard expenses that come with running a school. Every single penny will be used to ensure your child has an experience that goes above and beyond during their time at St Anne's.

It is really easy to make a donation, just visit: <https://cafdonate.cafonline.org/29075>

Or scan this QR Code:



Thank you for your contribution, I promise it will make a difference!

Adam Brooks
Chair of Governors

The Parent Portal and Arbor App



The Parent Portal and Arbor App are the primary communication tools used by the school to send emails and text messages.

The Parent App is the mobile version of our Parent Portal, for use on mobile devices such as smartphones and tablets. Parents can download the Parent App for free from either the Play Store for Android phones or the App Store for IOS.

Parents and Guardians have the same login and account details to the Parent App and the Parent Portal.

Arbor is used for absence, attendance, payments, signing up for school activities, updating personal details and giving consents as well as for viewing your child's school reports. It is a two-way communication tool, meaning parents can send messages as well as receive them and it is entirely free to use for parents.

School Meals

School meals are available for all the children. Since September 2014, optional free school meals have been offered to all Foundation Stage and Key Stage 1 children.

Our in-school catering is provided by IFG and can be ordered via SchoolGrid. You will receive your welcome email with instructions on how to set up your account in the coming weeks.

Parent Access to Book Meals: <https://app.schoolgrid.co.uk/login.aspx> . Orders can be placed up until 8:55am on the day and children may change between school lunches and packed lunches on a daily basis.

If you prefer your child to have a **packed lunch**, please note that nuts and nut products are strictly not allowed, so please do not send your child into school with any food (lunch boxes, morning snacks or birthday surprises) containing them. In addition, the inclusion of fizzy drinks is also not permitted.

Can we please encourage parents to provide children with packed lunches that complement the Government Food Lunch Standards (<https://www.nhs.uk/live-well/eat-well/food-guidelines-and-food-labels/the-eatwell-guide/>).

Xavier EYFS and KS1 Parent Screen Time Information



A PARENT GUIDE TO SMART TECH & SCREEN TIME

EYFS & KEY STAGE 1



OUR RECOMMENDATIONS

- ✓ Limit screen time each day, making sure it's switched off at least an hour before bed.
- ✓ Do not allow your child to have unrestricted internet access, gaming or any social media until they are in at least Year 10 (14-15 yrs)
- ✓ Educate yourself about the risks to young people of unrestricted internet access, social media and addiction.
- ✓ Teach your child about the risks and help guide them in using technology safely.

**YOU ARE THE PRIMARY
EDUCATOR OF YOUR CHILD.
EDUCATE YOURSELF AND
TAKE CONTROL!**

PUT PHYSICAL ACTIVITY & CONVERSATION FIRST

Your child is like a sponge, they are learning every day. The habits they form now, will be with them for life.

Aim for at least **one hour of physical activity each day** - running in the garden or at the playground, walking to and from school, playing football, riding their bike/scooter, Parkrun, going for a walk as a family - there are lots of options.

Talk to your child about the importance of being active and outdoors for health and wellbeing. Make sure they see you prioritising this time.



SCREEN TIME

✓ NOT ALL SCREEN TIME IS EQUAL

- It's important to distinguish between good and bad screen time.
- Addictive social media, video and gaming, unrestricted internet access and age inappropriate TV/games are examples of 'bad' screen time.
- Positive uses include those which support organisation, enhance learning, and fosters independence.
- Steer towards the good. Educate yourself and your child about the bad.

✓ UNDERSTAND THE NEGATIVE EFFECTS

The negative effects of screen time include:

- Prolonged use of screens can lead to digital eye strain, causing symptoms like dry eyes, blurred vision, and headaches.
- Exposure to blue light from screens can interfere with sleep patterns by disrupting the body's natural circadian rhythm.
- Spending excessive time on screens often leads to a sedentary lifestyle, contributing to health issues like obesity and poor cardiovascular health.
- High screen time is linked to anxiety, depression, and decreased social interaction due to reduced face-to-face communication.
- For children, excessive screen time can hinder cognitive and social skill development, affecting attention span and learning abilities.
- Notifications are distracting and reduce the ability to focus and complete tasks effectively.

✓ BE A DIGITAL ROLE MODEL

It's not just children who are susceptible to the persuasive design of Social Media and games! Anyone can find themselves mindlessly swiping through feeds for longer than they intended or using their smartphone before bed or at meal times.

Children are looking at us to learn behaviours. Lead the way by limiting your own screen time and demonstrating positive digital habits.

✓ CREATE A FAMILY AGREEMENT

Children thrive on routine. Creating a family agreement is a fantastic way of setting boundaries and clear expectations around screen time. This should include the amount of screen time each week as well as when and where this will take place.

✓ DECIDE AGE RESTRICTIONS IN ADVANCE

Decide in advance what age your child will have access to a smart phone, the internet, social media, games etc. It is much easier to set this out in advance than walk it back once they have started using it.

✓ ALWAYS USE PARENTAL CONTROLS

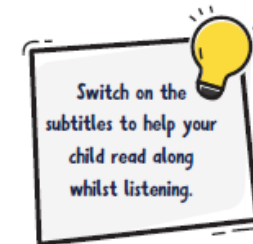
Parental controls are available; make sure they are set up and switched on until your child is an adult! This will enable you to control the device and limit functionality in an age appropriate way.

This school does not allow children to bring smartphones/watches onsite at any time.

Take control of your child's future wellbeing by taking control of their access to social media, gaming and the internet.

EDUCATIONAL IDEAS

Here are some of our favourite programmes and apps for Reception/KS1 children. A short amount of screen time is a good way for a child to wind down after a busy day - you could put on a timer to keep it under an hour a day!



Use these links to help

EDUCATE YOURSELF. EDUCATE YOUR CHILD.



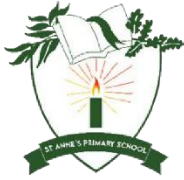
School Information

Please visit our school website for policies and school information.

Here are a few quick references you may need over the coming years. A helpful page to keep handy.

<u>WHAT TO DO IF ...</u>	ACTION
Your child is ill or absent	Report and give detailed reasons for absence via the Arbor Parent Portal by 8.40 am
Your child has sickness or diarrhoea	They will need to be off school for 48 hours from the last episode of vomiting or diarrhoea
The person who normally collects your child from school is changing	Telephone school no later than 2.30 pm and email Class Teacher
All holidays during term time will be recorded as unauthorised. If you do wish to request an absence ...	It is however essential that you seek the school's authorisation <u>before</u> a holiday is booked. Complete the <i>Application for Leave of Absence</i> form giving at least 2 weeks' notice. The link can be found on our website.
Your child is going to be late to school	Report via the Arbor Parent Portal before 8.50 am.
Your child has an appointment	Send a copy of the appointment letter or text notification to absence@stannes-chertsey.surrey.sch.uk Please include details of the time your child will be collected and returned to school.
You are changing address or contact information	Modify your details on the Arbor Parent Portal
You are changing your emergency contact number(s)	Modify your details on the Arbor Parent Portal
You are moving out of the area and changing school	Write an email/letter to the Headteacher/Class Teacher
Your family domestic arrangements are changing	Speak to or write an email / letter to the HSLW hslw@stannes-chertsey.surrey.sch.uk
You think you may be eligible for free school meals	Please contact the school office for more information
You are worried about your child's progress	Make an appointment with Class Teacher
You wish to make a formal complaint	Write to the Chair of the Governors, c/o the School
You wish to contact the Governing Body	Write to the Clerk to the Governors, c/o the School
You wish to withdraw your child from any aspect of school	Email/telephone Headteacher
You require financial support for child's paid for activities and trips	Speak to or write an email /letter to the HSLW hslw@stannes-chertsey.surrey.sch.uk
If you need to contact a member of staff	Please see the school website for contact details
Your child develops head lice or an infectious disease	Contact school office immediately
You think your child has lost clothing	Check in Lost Property chest at front of school in first instance and then Class Teacher. Please make sure all clothing is clearly labelled with your child's name.
You witness dangerous or inconsiderate parking by a parent/visitor	Photograph vehicle and registration number and contact police or Surrey CC
You are worried about the safety of your child	NEVER DELAY – Telephone the school immediately
You find school property at home	Please return to school as soon as possible
You wish to see the published Ofsted report	See school / Ofsted website

St Anne's Holiday Dates



Xavier Term & Holiday Dates 2026-27



	September Autumn Term 2026	October	November	December
Monday	31 7 14 21 28	5 12 19 26	2 9 16 23 30	7 14 21 28
Tuesday	1 8 15 22 29	6 13 20 27	3 10 17 24	1 8 15 22 29
Wednesday	2 9 16 23 30	7 14 21 28	4 11 18 25	2 9 16 23 30
Thursday	3 10 17 24	1 8 15 22 29	5 12 19 26	3 10 17 24 31
Friday	4 11 18 25	2 9 16 23 30	6 13 20 27	4 11 18 25
Saturday	5 12 19 26	3 10 17 24 31	7 14 21 28	5 12 19 26
Sunday	6 13 20 27	4 11 18 25	1 8 15 22 29	6 13 20 27

	January Spring Term 2027	February	March	April Summer Term 2027
Monday	4 11 18 25	1 8 15 22	1 8 15 22 29	5 12 19 26
Tuesday	5 12 19 26	2 9 16 23	2 9 16 23 30	6 13 20 27
Wednesday	6 13 20 27	3 10 17 24	3 10 17 24 31	7 14 21 28
Thursday	7 14 21 28	4 11 18 25	4 11 18 25	1 8 15 22 29
Friday	1 8 15 22 29	5 12 19 26	5 12 19 26	2 9 16 23 30
Saturday	2 9 16 23 30	6 13 20 27	6 13 20 27	3 10 17 24
Sunday	3 10 17 24 31	7 14 21 28	7 14 21 28	4 11 18 25

	May	June	July	August
Monday	3 10 17 24 31	7 14 21 28	5 12 19 26	2 9 16 23 30
Tuesday	4 11 18 25	1 8 15 22 29	6 13 20 27	3 10 17 24 31
Wednesday	5 12 19 26	2 9 16 23 30	7 14 21 28	4 11 18 25
Thursday	6 13 20 27	3 10 17 24	1 8 15 22 29	5 12 19 26
Friday	7 14 21 28	4 11 18 25	2 9 16 23 30	6 13 20 27
Saturday	1 8 15 22 29	5 12 19 26	3 10 17 24 31	7 14 21 28
Sunday	2 9 16 23 30	6 13 20 27	4 11 18 25	1 8 15 22 29

Bank and Public Holidays 2026/2027

Christmas Day	- Friday 25 th December	Easter Monday	- Monday 29 th March
Boxing Day	- Monday 28 th December	May Day Bank Holiday	- Monday 3 rd May
New Year's Day	- Friday 1 st January	Spring Bank Holiday	- Monday 31 st May
Good Friday	- Friday 26 th March	Summer Bank Holiday	- Monday 30 th August

Start of Term	<input type="checkbox"/>	School Holidays	<input type="checkbox"/>	Inset Day	<input type="checkbox"/>
End of Term	<input type="checkbox"/>	Public Holidays	<input type="checkbox"/>		

Xavier Term & Holiday Dates 2026-27



St. Anne's Catholic Primary School Term Dates 2026 - 2027

Autumn Term 2026	
Inset Day	Tuesday, 1 st September 2026 Wednesday, 2 nd September
Term Starts	Thursday, 3 rd September
Xavier Inset Day – Joint for Primary Schools	Friday, 2 nd October
Half Term	Friday, 23 rd October – Monday, 2 nd November 2026
St Francis Xavier Day (school closed)	Monday, 30 th November
Term Ends	Friday, 18 th December 2026
Spring Term 2027	
Term Starts	Monday, 4 th January 2027
Half Term	Monday, 15 th February – Friday, 19 th February 2027
Xavier Inset Day – Joint for Secondary Schools	Friday, 12 th March 2027
Term Ends	Thursday, 25 th March 2027
Summer Term 2027	
Term Starts	Monday, 12 th April 2027
Half Term	Monday, 31 st May – Friday, 4 th June 2027
Inset Day	Friday, 25 th June 2027
Term Ends	Friday, 16 th July 2027

Please remember that holidays cannot be authorised in term time and the Local Authority may impose fines for unauthorised absences.

School Uniform for EYFS



School Uniform

Girls	Boys
White Blouse (not sleeveless)	White Shirt
Charcoal Grey Knee-length pinafore or Skirt (flared or pleated) or grey tailored straight leg trousers*	Plain Charcoal Grey School Trousers or Shorts (jeans not permitted)
School Tie (clip-on tie option for EYFS & KS1)	School Tie (clip-on tie option for EYFS & KS1)
Bottle Green V-Necked Jumper, Sweatshirt or Cardigan	Bottle Green V-Necked Jumper, Sweatshirt or Cardigan
School Blazer and Badge (Optional)	School Blazer and Badge (Optional)
Bottle Green, Grey or White Socks (ankle or knee) Bottle Green or Grey Tights in Winter	Plain Grey Socks
Green & White Summer Dress	Grey Shorts in Summer
Black Shoes	Black Shoes
PE	PE
School Tracksuit Bottom/Top	School Tracksuit Bottom/Top
School Printed T-Shirt/Plain White T-Shirt	School Printed T-Shirt/Plain White T-Shirt
Black Shorts**	Black Shorts**
Black Tracksuit Trousers (alternative to school tracksuit)**	Black Tracksuit Trousers (alternative to school tracksuit)**
Black or White Trainers	Black or White Trainers
White Socks	White Socks

*not skinny fit, leggings or fashion trousers, i.e. trousers that do not show the shape of the leg

** loose fitting

Coats

Plain Dark Coloured Coat/Raincoat/Anorak, e.g. Dark Green, Navy, Grey or Black. Bags

Green School Reading Folder (This is the preferred option for Reception children, NOT a rucksack.) Green/Dark Coloured P.E./Shoe Bag with wellies and rainsuits.

Please ensure all clothing is labelled.

BUY EARLY & SAVE
up to **20%**

when you buy between
1 June - 14 July

*10% all year round savings + 10% early bird discount. Based on premium pack.

SAVE UP TO **15% OFF PACKS** when you buy between
15 July - 31 July

*10% all year round savings + 5% early bird discount. Based on premium pack.

BASIC PACK

UP TO **5%** ALL YEAR ROUND SAVINGS on this pack compared to buying items separately

- 1x Reversible Fleece Jacket
- 1x School Tie
- 1x Sweatshirt/Cardigan
- 2x Non-Iron Shirts/Blouses
- 2x Trousers/Skirts/Pinafore
- 5 Pair of Socks/Twin Pack Tights
- 1x Ultimate Bookbag with Accessories Pack
- 1x Perma Name Labels

RRP*
£110 - £142

PACK PRICE FROM
£105

PREMIUM PACK

UP TO **10%** ALL YEAR ROUND SAVINGS on this pack compared to buying items separately

- 1x Reversible Fleece Jacket
- 2x School Ties
- 2x Sweatshirts/Cardigans
- 4x Non-Iron Shirts/Blouses
- 3x Trousers/Skirts/Pinafore
- 5 Pair of Socks/Twin Pack Tights
- 1x Ultimate Bookbag with Accessories Pack
- 1x Water Bottle
- 1x Perma Name Labels

RRP*
£176 - £228

PACK PRICE FROM
£159

P.E. PACK

OVER **5%** ALL YEAR ROUND SAVINGS on this pack compared to buying items separately

- 1x Quarter Zip Training Top
- 1x P.E. T-Shirt
- 1x P.E. Gym Shorts
- 1x Essential Jogging Bottom
- 1x Pair of Plimsolls
- 1x 3 Pair of Socks
- 1x P.E. Bag

RRP*
£69 - £73

PACK PRICE FROM
£66

All prices are correct at time of print. All offers and prices are subject to availability and price change without notice. School Uniform Direct reserves the right to refuse any sale.

PLEASE NOTE: PACKS ARE SUBJECT TO CHANGE OF ITEMS AND PRICES - PLEASE VISIT US ONLINE OR IN-STORE FOR THE LATEST PRICES

6 month exchange & price promise

Purchase any item & get up to 6 months to exchange. Keep them unused and in the original packaging. Take advantage of up to 15% savings with multibuy offers & exchange if they grow out of it. In the unlikely event you find an identical item cheaper within 10 miles of our stores, we will refund the difference PLUS 5%.



We actively try to use UK manufacturers to help support our local and national industries. All our garments are ethically sourced to ensure that we are helping to sustain a better future for all.

WEST BYFLEET BRANCH

Address
1 Park Court
1 Pyford Road
West Byfleet KT14 6SD
(Next door to Lloyds TSB & opposite Barclays)

Phone
020 8544 5440

Opening Hours
Mon - Wed 10:30 - 17:30
Thu - Fri CLOSED
Sat 10:30 - 18:00
Sun 12:00 - 16:00

Parking
Pay & Display outside the store

Nearby Stations
West Byfleet Station (5 min walk)

Bus
436, 437, 446, 471



MULTIBUY OFFER
When you see this sign

BUY 2
SAVE 5%
BUY 3
SAVE 10%
BUY 4
SAVE 15%

Cross over different sizes, schools and ranges. Discount applies to each item within the same product group.

BOOK

your uniform appointments for BACK-TO-SCHOOL
sud.co.uk/booking

OR

SCAN ME



Store locator
View online pricelist
Book a store appointment
Shop your school online

From August 1st
Appointments get priority

Walk-ins are welcome but may have to queue longer

FOR EVERY BLAZER SOLD, WE PLANT A TREE!



St. Anne's Catholic School

Uniform Price List

Online • In-store • Phone

EST 1983
School Uniform Direct
www.SUD.co.uk

School Specific Items

Jacket



Buy two,
get £5 OFF

Reversible Fleece Jacket
Bottle green with logo
Water resistant, ultra
warm fleece

All sizes **£24.99***

Blazer



Buy two,
get £5 OFF

Blazer
Bottle green with logo
Custom fit, DuPont Teflon
coating, machine washable

Made to order
Sizes up to 42" **£34.99***

Uniform



UNDER
£14.45*
with

Sweatshirt V-Neck
Bottle green with logo
Colour rich, full colour last
- drip dry, cotton lined
Sizes 24" to 28" **£16.99***
Sizes 30" to 36" **£17.99**



UNDER
£14.45*
with

Cardigan Sweatshirt
Bottle green with logo
Colour rich, full colour last
- drip dry, cotton lined
Sizes 24" to 28" **£16.99***
Sizes 30" to 36" **£17.99**

P.E.



Rec-Y6

UNDER
£6.30*
with

T-Shirt P.E.
White with logo

Ages 3 to 12 yrs **£6.99***
Sizes XS to L **£7.99**



Rec-Y6

Quarter Zip Perf. Training Top
Bottle green with logo

One size **£6.99**



Drawstring Bag
Bottle green with logo

One size **£6.99**

SAVE
UP TO
20%
OFF PACKS

MB

**TAKE ADVANTAGE
OF PACKS
OR LOOK FOR
MULTIBUY OFFERS**

Accessories



Rec-Y2

Book Bag Ultimate
Bottle green with logo

One size **£11.99**

Accessory Pack
w/ Ultimate Bookbag **£3.49**
Purchased Separately **£4.99**



Infant Backpack

One size **£13.99**

Bottle green



Woolly Hat
Bottle green with logo

One size **£5.99**



Summer Hat
Bottle green with logo

One size **£5.99**

General Items

Shirts



UNDER
£7.05*
per shirt with

*based on an 22"-32" size

Short Sleeve and Long Sleeve Shirts
Unisex® Non-Iron Cotton/Polyester, thicker, super white



Years	Collar	Chest	Price
3-11 yrs	11" to 13.5"	22" to 32"	£16.49 (twin pack)
12-15 yrs	14" to 16"	34" to 42"	£18.49 (twin pack)
15+ yrs	16.5" to 17.5"	44" to 48"	£20.49 (twin pack)

Tie

Green/Gold

All years



Tie double stripe
Green/gold

Classic **£6.49**
Clip-on **£8.49**

General Items

Girls Skirt and Trousers



UNDER
£6.85*
with

Box Pleated Skirt
Charcoal Grey
Elastic Waist - Up to 15yrs

From **£7.99***



UNDER
£12.35*
with

Junior Davenport Skirt
Charcoal Grey
Elastic Waist - Up to 14yrs

From **£14.49***



UNDER
£12.35*
with

Heart Zip Pinafore
Charcoal Grey
Front Zip - Up to 14yrs

From **£14.49***



UNDER
£8.95*
with

Summer Dress
Green and white checked

From **£10.49***

Boys Trousers



UNDER
£7.25*
with

REVISÉ® Platinum®
by Revise Schoolwear®
Premium Fabric
Re-enforced Seams
Teflon 300 Wash Coating

From **£8.99***



UNDER
£9.35*
with

Elastic Back Trousers
Charcoal Grey
Heavyweight - Up to XL

From **£11.49***



UNDER
£13.60*
with

Fitted Waist Trousers
Charcoal Grey
Regular or Long

From **£16.49***

Socks and Tights



UNDER
£6.80*
with

Shorts Poly Cotton
Black
Cotton rich, elastic
waist
Up to 28" **£7.99***

Essential Training Pants
Black
Cotton rich,
heavyweight
Up to 11/13yrs **£18.99***

Jogging Bottoms
Black
Cotton rich,
heavyweight
2 - 10yrs **£12.49***
11 - 13yrs **£13.49**

Plimsolls
Black
Velcro and elastic
One size **£6.99**

Sport Socks
3 pairs **£4.99**

Pex Brand Socks and Tights

Tights Ages 2 - 13 years **£9.49**
Teen / Adults **£10.49**

Socks Up to Size 6
Size 7 to 11
5 pairs for **£7.49**
5 pairs for **£8.49**

Accessories



20 Labels
£6.99

Perma Name Labels
Sticks to almost anything
Waterproof, microwave
proof, and wash proof

40 Labels
£10.00

60 Labels
£14.00



Hush Puppies

School Shoes
Massive range of girls
and boys, junior and
senior shoes in store
and online.

Wraparound Care - Breakfast and After School Clubs

We are proud to offer Wraparound care at the beginning and end of the school day to children aged 4 to 11 years who attend St Anne's Catholic Primary School.

The aim is to provide a safe and stimulating environment for children to assist parents who have work or other childcare commitments. Both Breakfast and After School Club are extremely popular, so booking is essential.

Breakfast Club and After School Club are run by St Anne's Catholic Primary School and, therefore, all Xavier CET & School policies and procedures apply.

We offer both secured sessions for the year or ad hoc bookings. Please note that ad hoc booking has very limited availability, so if the session is required regularly, we recommend a secured session is booked.

Ad hoc bookings open in Arbor on 1st September 2026.

The Secured booking form along with session details and pricing will be sent to all parents, including new Reception parents, on 5th June 2026.

Car Parking

The school has been allocated 150 parking permits by the council, allowing parents to use the library car park at the end of the alley free of charge during set times at the start and end of the school day in term time. Each permit is valid for one academic year.

Permits for 2026/27 will be released on a first come, first served basis in the coming weeks. All new and existing parents will receive an email with an application form to complete before the summer break.

Parents & Friends Association



WHY HAVE A PFA?

The main function of our Parents & Friends Association is to raise extra, much needed, funds for the school, to enhance and enrich learning experiences for the children.

Our events encourage a close community, bringing together parents, staff, pupils and members of our wider community. It's a great way to meet other parents and are events are lots of fun!

HOW WE HELP

Thanks to the incredible generosity of our community, this year we have been able to fund:

- Zactiv Workshop (Steel from Gladiators)
- School branded gazebo and kits for District sports events
- Wet Play games
- Lockers
- A BIG project to be announced this term

Previous donations have included climbing frames, books, playground Play Scheme equipment, theatre productions, timber to repair benches and tables

**VISIT OUR STALL AT THE
BLACK CHERRY FAIR
SATURDAY 11TH JULY
ABBEY FIELD**

OUR EVENTS

Some of the events we've held over the past year:

Elfridges
 Mother's/Father's Day Stalls
 Pre Loved Uniform Sales
 Easter Egg Hunt
 Cake/Ice Lolly Sales
 Break the Rules Day
 Parents Quiz Night
 Disco
 Black Cherry Fair & Goose Fair stalls (local community events)




WE RAISED ALMOST £17,000 IN THE LAST ACADEMIC YEAR (Including 2 generous company donations)

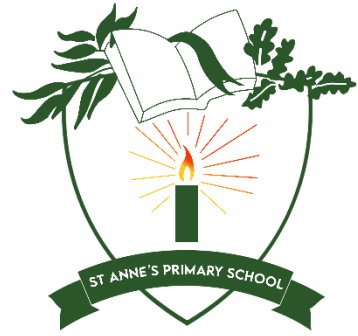
GET INVOLVED

The more people involved, the more we can achieve and the easier it will be. Volunteering at just one event per year makes a big difference. Whether it's 30 mins at a cake sale or project managing a whole event, it all helps.

Maybe you have a professional skill that could help us?
 Maybe your employer offers match funding?
 Maybe you have an idea for an event?

PLEASE GET IN TOUCH!

 stanneschertseypfa
 St Anne's Catholic Primary School PFA
 stannespfa@stannes-chertsey.surrey.sch.uk
 Registered Charity #1089504



St Anne's Catholic Primary School

Free Prae Road
Chertsey
Surrey, KT16 8ET

Telephone: 01932 562251

Email: office@stannes-chertsey.surrey.sch.uk

Visit: <https://www.stannes-chertsey.surrey.sch.uk>



Xavier Catholic Education Trust
Guildford Road
Chertsey
Surrey KT16 9LU
<https://www.xaviercet.org.uk/>