

SCHOOL TRAVEL PLAN

An illustration of a pink brain with several glowing lightbulbs above it, symbolizing ideas and learning. A child is running happily to the right, with a heart icon above them.

**HEALTHIER BODIES
& BRIGHTER BRAINS**
Wakes us up for learning!

An illustration of a landscape with green hills, trees, and three white wind turbines under a blue sky with a smiling sun and clouds.

CLEANER AIR
Fewer cars = Fresher
air for our lungs!

An illustration of a family (mother, father, and two children) walking together. A blue car is parked nearby. A signpost says 'PARK AND STRIDE'. A circular badge says '5 MIN WALK'.

**PARK
AND
STRIDE**

**5
MIN
WALK**

SMARTER TRAVEL
Try Park and Stride sometimes!

Let's travel smarter together, ST ANNE'S! Join the challenge!





School Travel Plan

pro | con

Class Map

Park and Stride

School Travel Map

OUR SMART TRAVEL CHALLENGE



2022

OUR BIG GOALS FOR SCHOOL!

1. BRIGHTER BRAINS

HEART PUMPING → BRAIN WAKING → READY TO LEARN



HEART PUMPING → BRAIN WAKING → READY TO LEARN



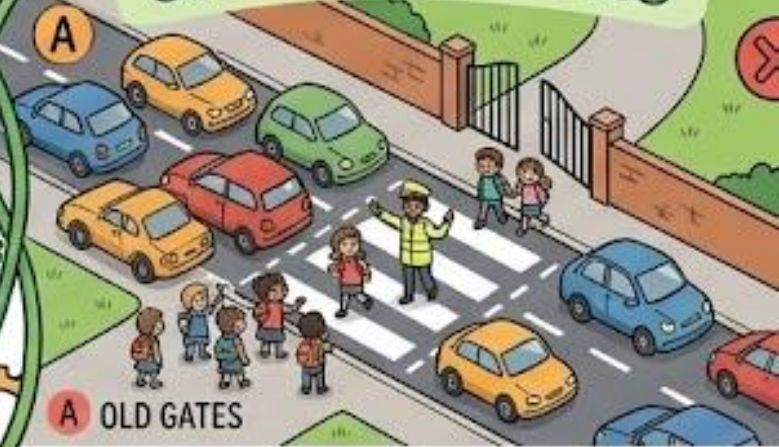
2. CLEANER AIR



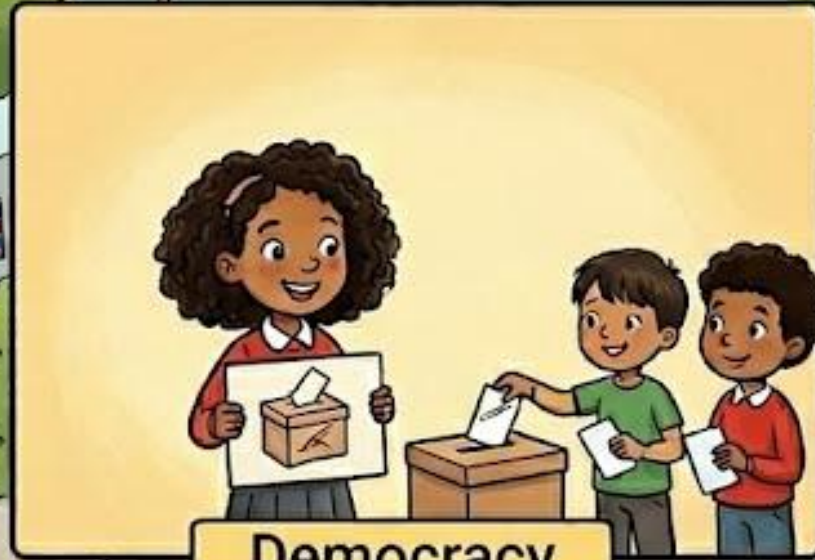
SWITCH OFF



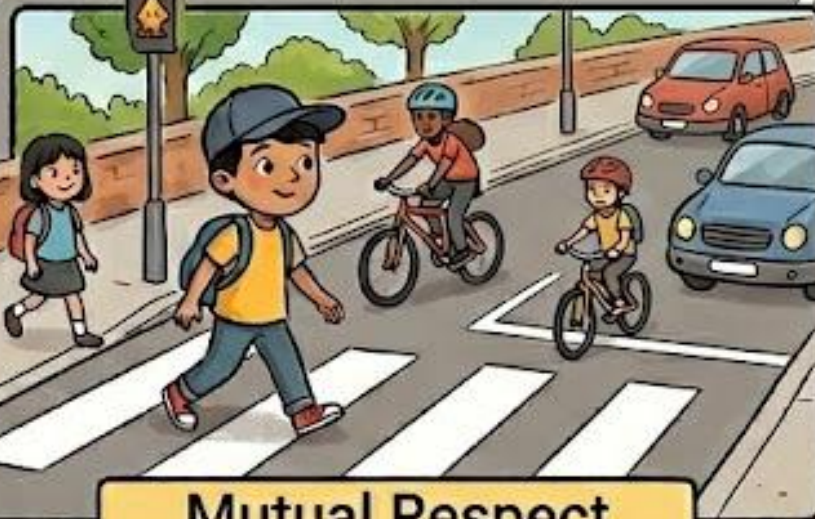
3. SAFER GATES



British Values Made Clear



Democracy



Mutual Respect



Pupils show these values through smart travel choices!



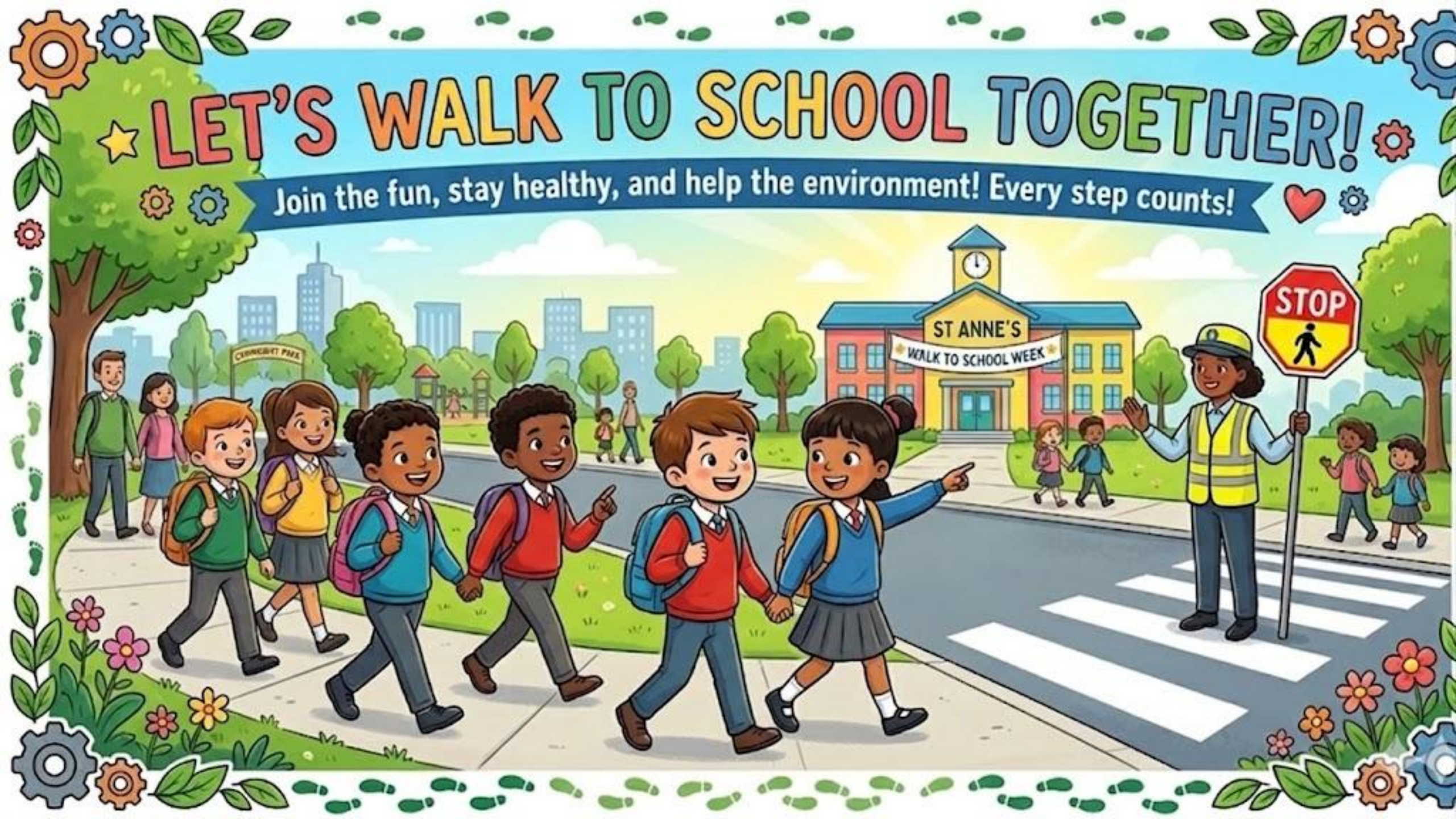
Individual Liberty



Responsibility

★ LET'S WALK TO SCHOOL TOGETHER!

Join the fun, stay healthy, and help the environment! Every step counts!



Let's us make the Sign of the Cross and pray this special prayer written by one of our classmates, Leighton.



In the name of the Father, the Son and the Holy Spirit. Amen

Dear God,

Help us to make smarter choices when travelling to school.

Thank you for giving us our bodies to walk and be active.


We give thanks to you for giving us different travel options.

Remind us to use our bodies and not ruin the world you created.

Amen

School Travel Map

THANK YOU

For watching our 
School Travel Plan Assembly!
We appreciate your support!



https://www.youtube.com/watch?v=QqgSd_TFiEE

WAKE UP!

Wake Up! - Makaton Signing with
Singing Hands and Out of the Ark Music

CHORUS

*Wake up! Wake up!
Give yourself a shake up,
Get your body moving.
Reach up, jump up,
Give your friend the 'thumbs up'!
It's another new day!
(Repeat)*

Get your feet
Dancing to the beat,
Get your body moving.
Raise a shout (HEY!)
Let your feelings out,
It's another new day!

CHORUS

Repeat verse

INSTRUMENTAL

Repeat verse twice (repeat last line)

The Journey to School (Slide 1)

Welcome to our special assembly about the school travel plan.

Scene 1: Outside School (Slide 2)

T: Every morning, children travel to school in lots of different ways. The choices we make affect not just us, but our whole community.

R: There's a lot of traffic here in the mornings.

A: That can make it unsafe for people crossing the road.

C: And it affects the air we all breathe.

R: But how can we make these journeys safer, healthier, and better for the planet?

L: I come to school by car.

C: I walk with my family.

T: I ride my scooter!

Scene 2: In the Classroom (Slide 3)

F: Our school has something called a School Travel Plan. Does anyone know what that is?

K: Is it a plan for how we travel to school?

F: Exactly! A School Travel Plan helps everyone think about safe, healthy, and kind ways to get to and from school. Our school travel plan helps everyone make safe, healthy, and responsible choices about how they travel.

W: So, it's about looking after ourselves and others?

F: Yes. That's part of being a responsible citizen.

Scene 3: Talking About Choices (Slide 4)

R: We want fewer cars at the school gate, so, walking and cycling can be really great! The Travel Plan encourages walking, cycling, and scooting when it's safe to do so.

N: Walking is good for our bodies.

L: And cycling and scooting help the Earth too!

N: That means fewer cars near the school.

L: Which helps keep everyone safe and reduces pollution.

C: It's about working together to improve our school community.

Scene 4: Getting Involved (Slide 5)

W: Children aren't just passengers in the plan—you can help too! An important part of the School Travel Plan is listening to pupils' ideas.

T: We can share our opinions through the Voice of the Children.

C: We can walk or cycle when we can.

L: We can take part in Walk to School Week.

R: And we can politely remind grown-ups to park safely away from the gates and follow the school rules.

K: Why does it matter? Here are the School Travel Plan's three big goals:

A: Brighter Brains: Walking, scooting, or cycling wakes up your brain! It gets your heart pumping, so when you sit down at your desk, you are already energised and ready to learn.

R: Cleaner Air: Cars produce exhaust fumes. When lots of cars sit outside our school gates with their engines running, it makes the air dirty. Walking or wheeling keeps the air outside our school fresh and sweet. We can also remind our parents to switch off cars in the kiss and drop zone. This will help us breathe cleaner air.

L: Safer Gates: If there are fewer cars parked outside the school and driving into school, it is much easier and safer for everyone to cross the road.

Scene 5: British Values Made Clear

T: By making smart travel choices, pupils show important values.

N: We show **democracy** by sharing our views and helping make decisions.

C: We show **individual liberty** by making positive choices for our own health.

T: We show **mutual respect** by thinking about other people's safety.

C: And we show **responsibility** by caring for our environment and community.

R:
A School Travel Plan helps everyone see,
Better journeys for you and me.
We make smart choices, we do our part,
Healthy journeys and a caring heart!

T: So, here is our challenge for the rest of the term. We aren't saying you can never use a car. Sometimes it's too far or raining cats and dogs! But we want to try "**Park and Stride.**" If you have to drive, see if your grown-up can park just 5 minutes away, and you can walk the last little bit together.

R: Next week, your teachers are going to be tracking how we travel to school. Let's see which class can get the most active travel points!

C: Can we make our school gates safer? *(Get the kids to shout: YES!)*

K: Can we make our lungs happier? *(YES!)*

N: Can we activate our brains before the school bell rings? *(YES!)*

E: Thank you, everyone. Have a safe and active week!

S: Let's us make the Sign of the Cross and pray this special prayer written by one of our classmates, L.

In the name of the Father, the Son and the Holy Spirit. Amen

M:
Dear God,

Help us to make smarter choices when travelling to school.

Thank you for giving us our bodies to walk and be active.

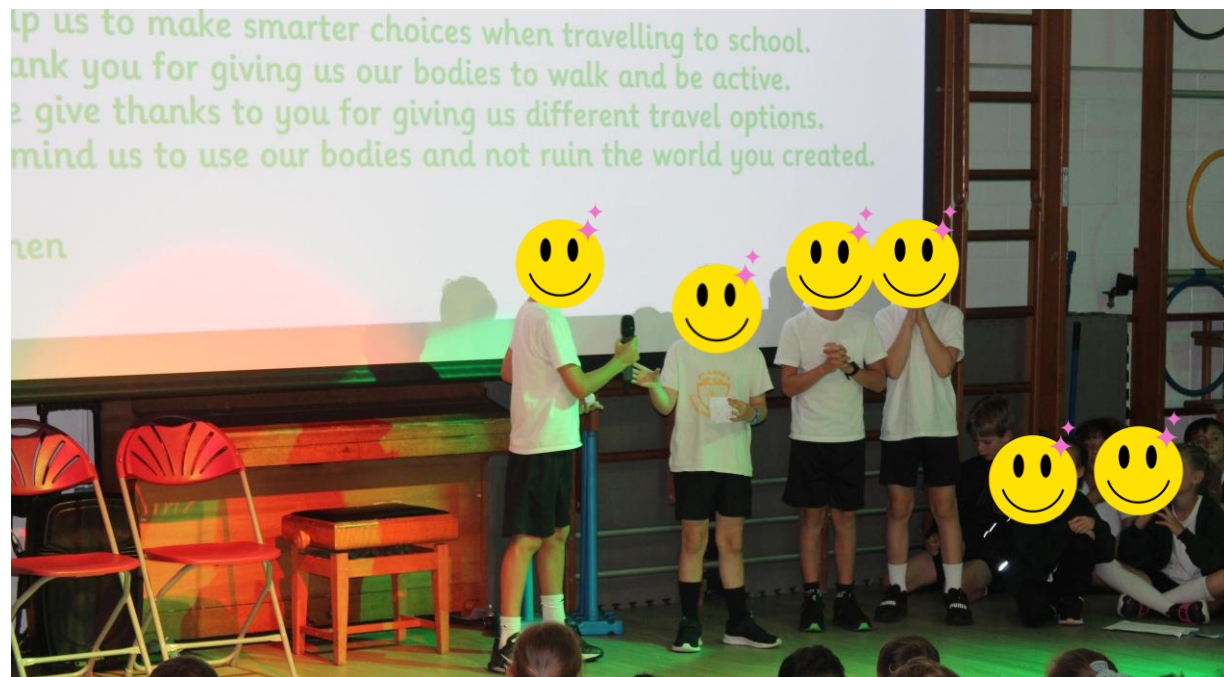
We give thanks to you for giving us different travel options.

Remind us to use our bodies and not ruin the world you created.

Amen

S & J:

Thank you for watching.



Thursday 4th June 2026

Year 4 presented a short drama to the school to explain the school travel plan. This caused great excitement amongst the children who are planning to travel to school in safer and smarter ways.

What the children said after watching the drama:		
■ Key Stage 1	■ Lower Key Stage 2	■ Upper Key Stage 2
The play showed me that active travel means...walking to school when I can and not using a car.	Leaving the car at home is better for our environment because...it reduces dirty air and makes sure people breathe in good air.	The play highlighted that our current travel habits impact the local community by...filling the air with pollution and making it harder for us to breathe.
Walking or scooting to school makes me feel...relaxed and ready for the new day.	If more children park and stride, the school gates will be...clearer and less pollution filling God's great creation.	Implementing a strict School Travel Plan is crucial because it reduces...the fumes that the cars produce. We must encourage everyone to travel to school in safer ways.
Instead of coming to school by car, I could try to...park and stride; or walk to school.	The main message the characters wanted us to learn was...to be always be safe and to travel to school in a healthy way to reduce air pollution.	An argument the play made in favour of active travel that really convinced me was...to try and use a car less. We can cycle, scoot or walk to school, unless it is too far.
It is safer to cross the road when I...see less cars at the school gates.	I can help my family follow the School Travel Plan by...telling them to turn their engines off when they drop off at the school gates.	To encourage more families to ditch the car, our school council should...send a message to everyone to encourage them to stop using cars.
	One obstacle to walking to school might be the weather, but we can solve this by...parking close to the school and using an umbrella and wearing a raincoat. This will keep the fumes away.	Although some families must drive due to distance, they can still contribute to safety by...parking and striding. This will help our children breathe and stay healthy.

WALK TO SCHOOL!

Step up for St. Anne's!



Stay healthy



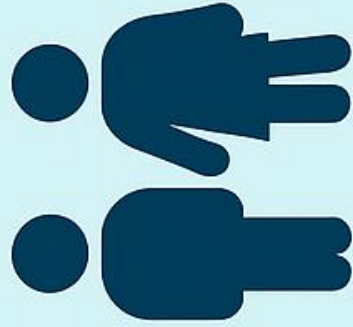
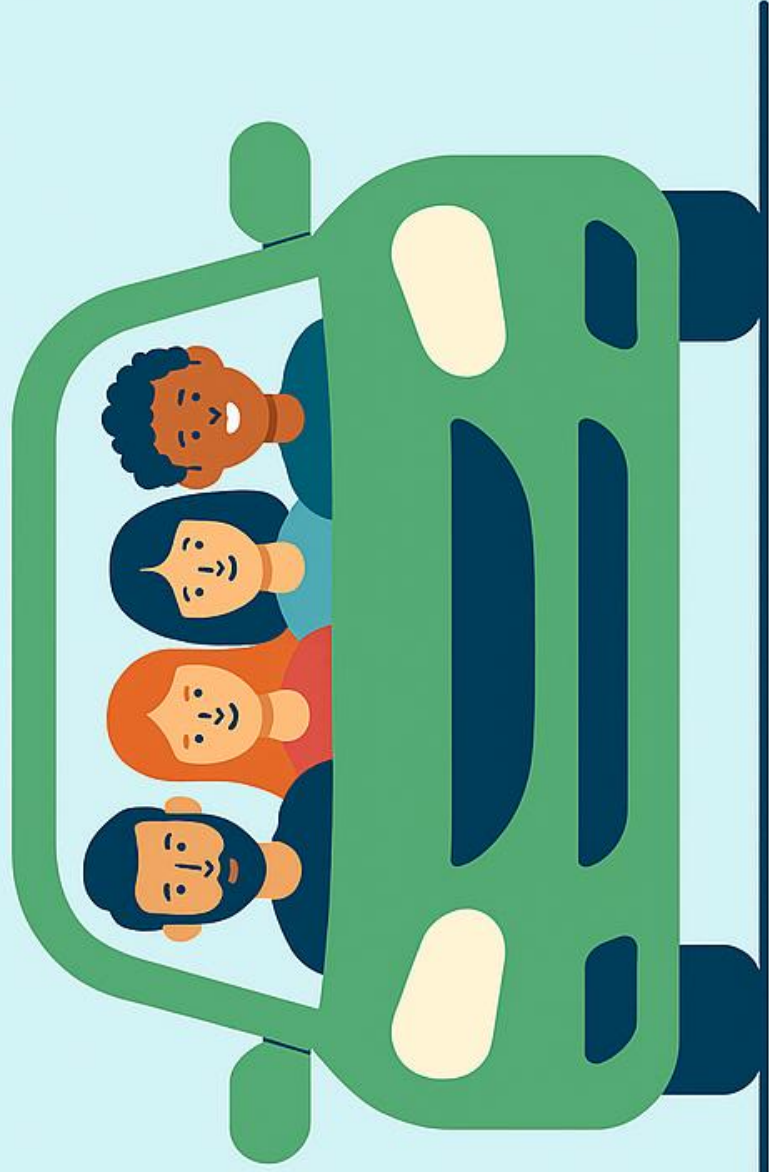
Help the environment



Have fun with friends

CAR SHARE OR WALK!

Help reduce traffic and
pollution getting to
St. Anne's.



CAR SHARE



**WALK TO
SCHOOL**