

Namaste مرحبا Willkommen Bem Vindo Selamat Datang
Bienvenidos Namaste Bienvenue Croeso Welcome Bienvenidos أهلا وسهلا
Benvenuti Welkom
Welkom Bienvenue Bem Vindo
Bienvenue مرحبا Welcome Welkom Croeso
Bienvenidos أهلا وسهلا أهلا وسهلا مرحبا Namaste
Selamat Datang Welcome Bienvenue Bem Vindo
Willkommen Benvenuti Selamat Datang Croeso
добре дошъл Benvenuti Willkommen
Καλώς ήλθατε Benvenuti

Meet the Teacher

Year 4



St. Anne's Mission Statement.



With Christ at the centre of our lives,
we live out our call to serve the young;

**"It is not enough to love children,
They must know that they are loved."**

St. John Bosco

St. Anne's School Prayer



Dear Lord, may Christ be at the centre of all we do.
With your help, fill our school with laughter and
learning.

With your guidance, help us listen and respect each
other, no matter our differences.

With your love, encourage us to be kind and gentle.
With your light, shine on our school family, so we
can be a light for others.

We are all part of St Anne's community and we know
that we are loved.

Amen.



Welcome to Year 4

4 St Carlo and 4 St Jane



Ms Dimech



Mrs Davies



Mrs Hurrell



Mrs Salt



Mr Rose



Ms Wilder

What an exciting year it will be for your children,
you and the incredible year 4 team!

All about Year 4

- ▶ Following the national curriculum
- ▶ Theme for each half term.
- ▶ Autumn 1 is Walk like an Egyptian!
- ▶ Trip to Haslemere Museum – **Thursday 25th September**
- ▶ Egyptian Day (**Tuesday 30th September** – dress up).
- ▶ PE with the class teacher will be on Tuesday mornings.
- ▶ PE with Mr Ball will be on Thursday afternoons.



All about Year 4

- ▶ Autumn 2 is called 'Lost and Found'.
- ▶ Christmas play – **Monday 15th December**
– **1:30pm** at St Anne's Church – TBC.
- ▶ Please look on the Calendar for key dates which will include things like parents' evenings, Class Assemblies, Celebration Afternoons.

Maths

We follow the scheme, **Power Maths**. Power Maths is a whole-class mastery programme recommended by the Department for Education. The scheme is aligned with the National Curriculum for mathematics.

Three Styles of Learning: Lessons are designed to engage children through:

- Concrete learning
- Pictorial representations
- Abstract thinking

Balanced Focus: Lessons include a strong emphasis on:

- Arithmetic
- Problem Solving and Reasoning

Progressive Structure: Power Maths builds knowledge step-by-step, ensuring children develop confidence and depth in their mathematical understanding.

Assessment and Support: Regular assessments help us identify gaps and provide targeted support to ensure every child makes progress.

All about Year 4



National times table check takes place in June.

Children need to learn their times tables.

Our New Whole-School Homework Approach

- This year, we have introduced a consistent approach to homework across the whole school.
- Each child will receive one CGP Targeted Question Workbook per subject:
 - Maths
 - Reading
 - Punctuation, Grammar & Spelling (GPS)
- Homework will be set and due on the same day each week.
- A timetable will be shared on the next slide.
- Homework will be set from the week commencing 15th September.

Why this approach?

- Ensures consistency across all year groups
- Provides support for families with children in multiple year groups
- Maintains high expectations for all pupils
- Establishes a clear structure to build routine and independence
- Uses quality resources aligned with the National Curriculum

Homework Timetable		
Homework	Date set:	Date due:
Daily Reading with comments and a weekly parental signature	Daily	Diaries in school every day.
Reading Comprehension Targeted Question Book	Monday	Thursday
Maths Targeted Question Book	Tuesday	Friday
Grammar, Punctuation and Spelling Targeted Question Book	Thursday	Monday
Throughout the week, engage with our online learning resources: Times Tables Rock Stars, Spelling Shed, and Accelerated Reader.		Friday - engagement will be checked

Reading, Writing and Maths expectations

Reading	Writing	Maths
Daily reading at home	Whole class texts	Practical/pictorial/abstract
Reading diaries to be completed by child daily.	Small steps build up to a longer piece of writing.	Word problems and reasoning in every lesson and context.
Adult to sign diary once a week.	Spelling Shed – children should practise for 10 minutes daily.	Times Table Rockstars to prepare children for national test in June. 10 minutes per day.
Accelerated Reader & myOn Children can quiz at home. Please do not help them.	SPaG taught within lessons.	My Maths – used to support children's learning and used for homework.
Star Reading (assessment) – in school.	Different genres of writing.	
Whole Class reading	Cursive (joined) handwriting	

Ten:Ten Resources



Call to Family,
Community, &
Participation



Dignity of Work
& the Rights of
Workers



Dignity of the
Human Person



..... CATHOLIC SOCIAL TEACHINGS

Care for God's
Creation



Solidarity



Preferential
Option of the Poor
and Vulnerable



Rights &
Responsibilities



PSHE and RSE

Ten Ten Resources is an award-winning Catholic educational organisation that is well-respected and has been approved by our diocese for the teaching of PSHE and RSE in Primary school.

If you would like more information about the PSHE and RSE your child is learning at school please log in to the Ten:Ten website Parent Portal using the following details:

www.tentenresources.co.uk/parent-consultation-primary

Username: stanneschertseyparents

Password: stanneschertseyparents

Polite Reminders/Expectations

- ▶ Uniform
- ▶ Punctuality and absence.
- ▶ Read regularly with your children.
- ▶ No scooter or bike riding through the playground
- ▶ No mobile phones on in school unless directed to use them, e.g. school assemblies.
- ▶ No dropping off before 8.35.

Earrings – only plain stud type earrings may be worn.

Please remember that no jewellery is to be worn on PE days as recommended in the Surrey Guidelines.

Earrings must be taken out **before** any PE day. Staff at school are unable to take earrings out and pupils cannot tape them therefore they cannot take part in contact activity. Bracelets or necklaces should not be worn either.

P.E

Girls	Boys
Black Shorts**	Black Shorts
School Printed T-Shirt/Plain White T-Shirt	School Printed T-Shirt/Plain White T-Shirt
Black or White Slip-on Plimsolls/Trainers	Black or White Slip-on Plimsolls/Trainers
White Socks	White Socks
Black Tracksuit Trousers (alternative to school tracksuit)	Black Tracksuit Trousers (alternative to school tracksuit)
School Tracksuit Bottom/Top	School Tracksuit Bottom/Top

*not skinny fit, leggings or fashion trousers, i.e. trousers that do not show the shape of the leg

**shorts need to be just above the knee, not shorter



Swimming will start on Wednesday 5th November.

Swimming is statutory.

We will be needing some parent volunteers to assist please.

Reading

At St. Anne's we promote reading through everything we do. We provide regular opportunities for the children to read throughout the school day and we also expect the children to read daily at home.

These are some of the main reasons why:

1. Reading helps build communication skills.
2. Reading opens the imagination.
3. Reading has a positive impact on progress at school.
4. Reading can improve mental health and wellbeing.
5. Reading is a fundamental life skill.

HERE'S THE IMPACT OF READING 20 MINUTES PER DAY!

A student who reads

20:00

minutes per day

A student who reads

5:00

minutes per day

A student who reads

1:00

minute per day

will be exposed to
1.8 MILLION
words per year
and scores in
90th PERCENTILE
on standardized tests

will be exposed to
282,000
words per year
and scores in
50th PERCENTILE
on standardized tests

will be exposed to
8,000
words per year
and scores in
10th PERCENTILE
on standardized tests

The importance of reading for pleasure



Reading for pleasure is the single most important indicator of future success and one of the best routes out of poverty (OECD 2002). Recent research by publisher Egmont showed:



75% of 7-11 year olds who read for pleasure daily will be predicted **5+ GCSEs.**



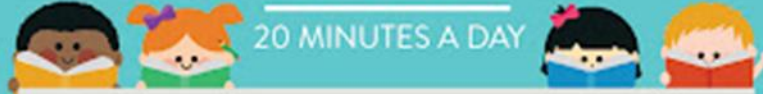
10-16 year olds who read for pleasure will make **4 x the progress in vocabulary, maths and spelling** than those whose parents have a degree.



1 in 10 children have a **mental health disorder** which is likely to be **Improved** by reading for pleasure.

READ

20 MINUTES A DAY



STUDENT A
reads at home



20

min/day

STUDENT B
reads at home



5

min/day

STUDENT C
reads at home



1

min/day

THEY WILL HEAR

1,800,000

282,000

8,000

WORDS PER YEAR

THEY WILL HAVE READ FOR

851

212

42

HOURS BY 6TH GRADE

AND ON STANDARDIZED TESTS,
THEY WILL LIKELY SCORE BETTER THAN

90%

50%

10%

OF THEIR PEERS

Source: <http://readdbq.org/2014/11/19/read-20-minutes-day/>

Reading

If you want to see if a book is on Accelerated Reader, use the following website.

<https://www.arbookfind.co.uk/UserType.aspx?RedirectURL=%2fdefault.aspx>

RENAISSANCE*

Welcome

RENAISSANCE
Accelerated Reader Bookfinder™

United Kingdom & Ireland

Searching for Accelerated Reader books is fun and easy with this free online tool.

Please tell us who you are:

- Student
- Parent
- Teacher
- Librarian

Submit



Remember, your children should be quizzing weekly and recording it in their reading diary.

You can do an advanced search to create a list of suitable books (in a specific genre), that are on Accelerated Reader.

United Kingdom & Ireland

RENAISSANCE
Accelerated Reader Bookfinder™

Student Quick Search **Advanced Search** Collections


AR BookBag™

Enter Keycode

You do not need a Keycode to search. However, if your child's teacher gave you a Keycode, enter it here to search the most relevant books for your child.

You can search for book titles based on authors, topics or titles of books. Just type what you want to search for in the blank field above and click **Search**. You will then be able to sort your search results, select book titles to add to your AR BookBag, print a list of your search results or start a new search.

...

 **A Parent's Guide to Accelerated Reader BookFinder »**
Learn more about how to help your child develop a love for reading

Values

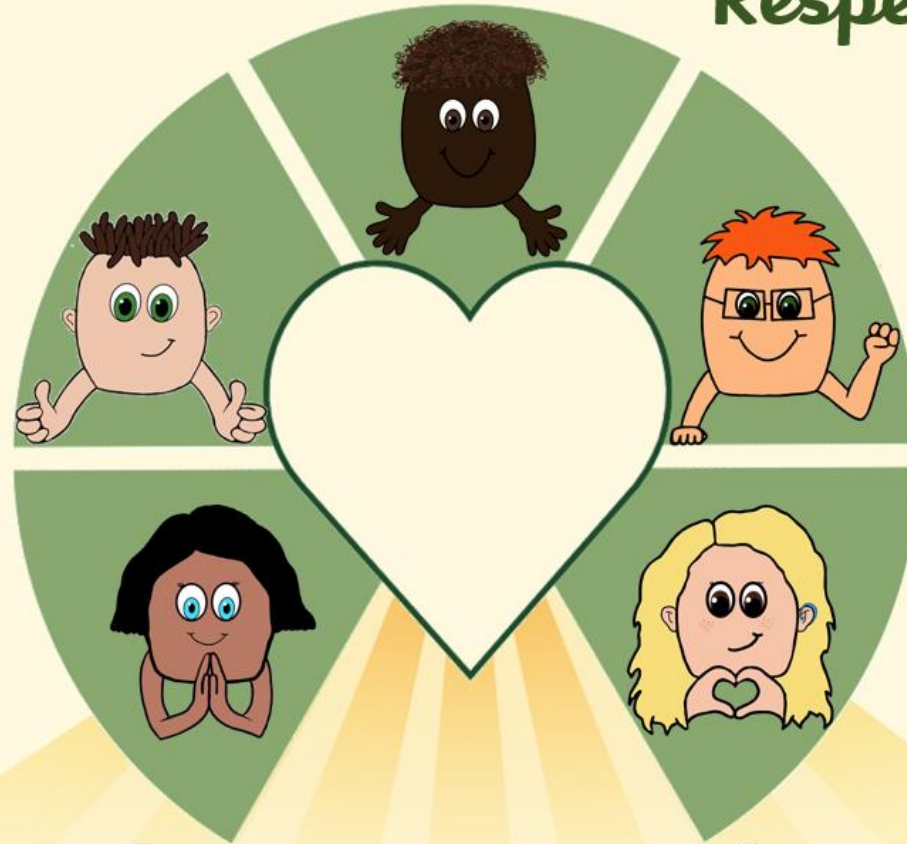
St. Anne's Values

Ralph
Respect



Peter
Perseverance

Iggy
Inclusivity



Finley
Forgiveness

Kitty
Kindness

We know we are loved

Attendance

At St Anne's, we closely monitor attendance and are committed to working together to improve school attendance in line with the statutory guidance set out by the Department for Education.

Regular attendance is crucial for academic progress and overall development.

Data clearly shows a direct correlation between attendance levels and later educational outcomes.

We understand that absences are sometimes unavoidable and unforeseen; however, we actively encourage promoting good attendance.

When your **child's attendance falls below 94%, you will receive a letter regardless of the reasons.**

If a **child's attendance is significantly lower than this, you will be asked to support further absences with medical evidence.**

Attendance monitoring is on-going year on year so if your child had lower attendance in previous years, you may be asked to continue to provide medical evidence.





ATTENDANCE MATTERS

DID YOU KNOW..?

CHILD'S ATTENDANCE

95%
90%
85%
80%
75%

YOUR CHILD LOSES...

9 DAYS FROM SCHOOL
19 DAYS FROM SCHOOL
29 DAYS FROM SCHOOL
38 DAYS FROM SCHOOL
48 DAYS FROM SCHOOL

YOUR CHILD ALSO LOSES...

50 LESSONS
100 LESSONS
150 LESSONS
200 LESSONS
250 LESSONS

Please be aware that no holidays will be authorised during term time.

We may ask for medical evidence should we believe you have been on holiday during term time either side of a school holiday.

Lateness

- It is very important that your child is in on time.
- Gates open at **8:35am** and remain open until **8:50am sharp**.
- **Children do not like coming into school late.**
- They miss the morning activity which sets them up for the day.
- It disrupts the learning of the other children.
- It can cause them to be dysregulated for the whole day.
- Should you have any questions regarding attendance or lateness, please do speak to Mrs Burke or Mrs Martin.

St. Anne's Safeguarding Team



Carmel Martin
Headteacher



Seán Cassidy
Assistant Headteacher



Alice Wales
Designated Safeguarding
Lead



Rachel Lewthwaite
SENDCo/Mental Health
Lead



James Kibble
CEO Xavier CET



Anne Halliday
CET Safeguarding
Compliance Director



Niamh Burke
Home School Link Worker



Sophie Gullick
Senior Leader Early Years



Ellie Taylor
Senior Leader



Francesca Dyer
Breakfast Club
Manager

Consents are on Arbor.

Please log in to your child's account and update/provide information. Any trouble doing so, please contact the office.



Summary

- ▶ *The children are our priority, and our job is to make sure that they are happy, safe and loved.*
- ▶ *We have high expectations for behavior and learning.*
- ▶ *If you have any concerns or worries, please come and see us .*
- ▶ *Many thanks for your support and we look forward to being with you this year!*

Please contact us via email

Ms Dimech

ldimech@stannes-chertsey.surrey.sch.uk

Mr Rose

prose@stannes-chertsey.surrey.sch.uk

In a world
where you can
be anything...

be kind 

The image features a central text element 'Any questions?' in white, bold, sans-serif font. The text is split across three overlapping teal-colored rectangular shapes that are slightly tilted. The background is white, with abstract green geometric patterns in the top-right and bottom-right corners, consisting of overlapping triangles and polygons in various shades of green. A dark teal horizontal bar is partially visible behind the text shapes.

Any questions?