

MEET THE TEACHERS

Year 2 2024-2025

Mrs Sanchez

Mrs Whelan

Mr Cassidy



ST ANNE'S MISSION STATEMENT

With Christ at the centre of our
lives, we live out our call to serve the
young;

"It is not enough to love children, they
must know that they are loved."



ST BRIDGET



Mrs Sanchez

Mrs Parkes

Mrs Carter

ST JOHN BOSCO



Mr Cassidy (Monday and Tuesday)

Mrs Whelan (Wednesday - Friday)

Mrs Limmer

Mrs Cann



KEY DAYS / DATES

PE (PS Sports) and Music is on

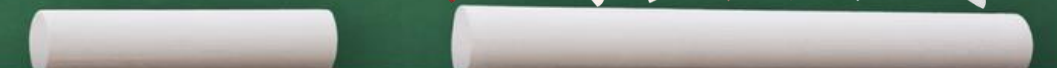
Thursday afternoon

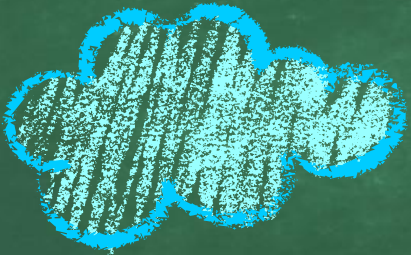
Teacher Led PE - Mondays

Nurturing nurses day - 1st October

INSET - Friday 4th October

Please look on the Calendar for key dates which will include things like parents evenings, Class Assemblies, Celebration Afternoons.





HOMework

English or Maths sent home every Monday, to be returned by the next Monday

Weekly spellings
Maths focus stuck in diary


Accelerated Reader book – 1 at a time. Children can change this at school as soon as they have completed a quiz on it. We encourage children to do this by themselves.

Reading at home – 15-20 mins daily. Recorded in reading diaries which must be in school every day.

**AR -Specific
Link for
St Anne's**

Expectations

St. Anne's Values

Ralph Respect 

Finley Forgiveness

Peter Perseverance

Iggy Inclusivity

Kitty Kindness

We know we are loved

DO YOUR BEST



1

2

RESTORE AND REFLECT



Reading, Writing and Maths

Reading	Writing	Maths
Daily phonics (consolidate all sounds from EYFS/Y1) - fluency focus in Autumn 1	Whole class texts	Power Maths (White Rose edition)
Move onto a comprehension focus later on in the year	Cursive handwriting	Maths Mastery 15 mins daily
Guided reading 1x weekly		Autumn 1 - Place Value to 100. Addition and Subtraction to 100
Accelerated Reader - Star reader tests		

Textbook A

Week 1	Unit 1: Numbers to 100 10 Lessons
Week 2	
Week 3	Unit 2: Addition and subtraction (1) 12 Lessons
Week 4	
Week 5	Unit 3: Addition and subtraction (2) 9 Lessons
Week 6	
Week 7	Unit 4: Money 9 Lessons
Week 8	



POLITE REMINDERS

UNIFORM

PUNCTUALITY AND ABSENCE

READING REGULARLY WITH YOUR CHILDREN

NO SCOOTER OR BIKE RIDING THROUGH THE

PLAYGROUND

NO MOBILE PHONES ON IN SCHOOL UNLESS

DIRECTED TO USE THEM, E.G. SCHOOL

ASSEMBLIES.

NO DROPPING OFF BEFORE 8.35

NO NUTS

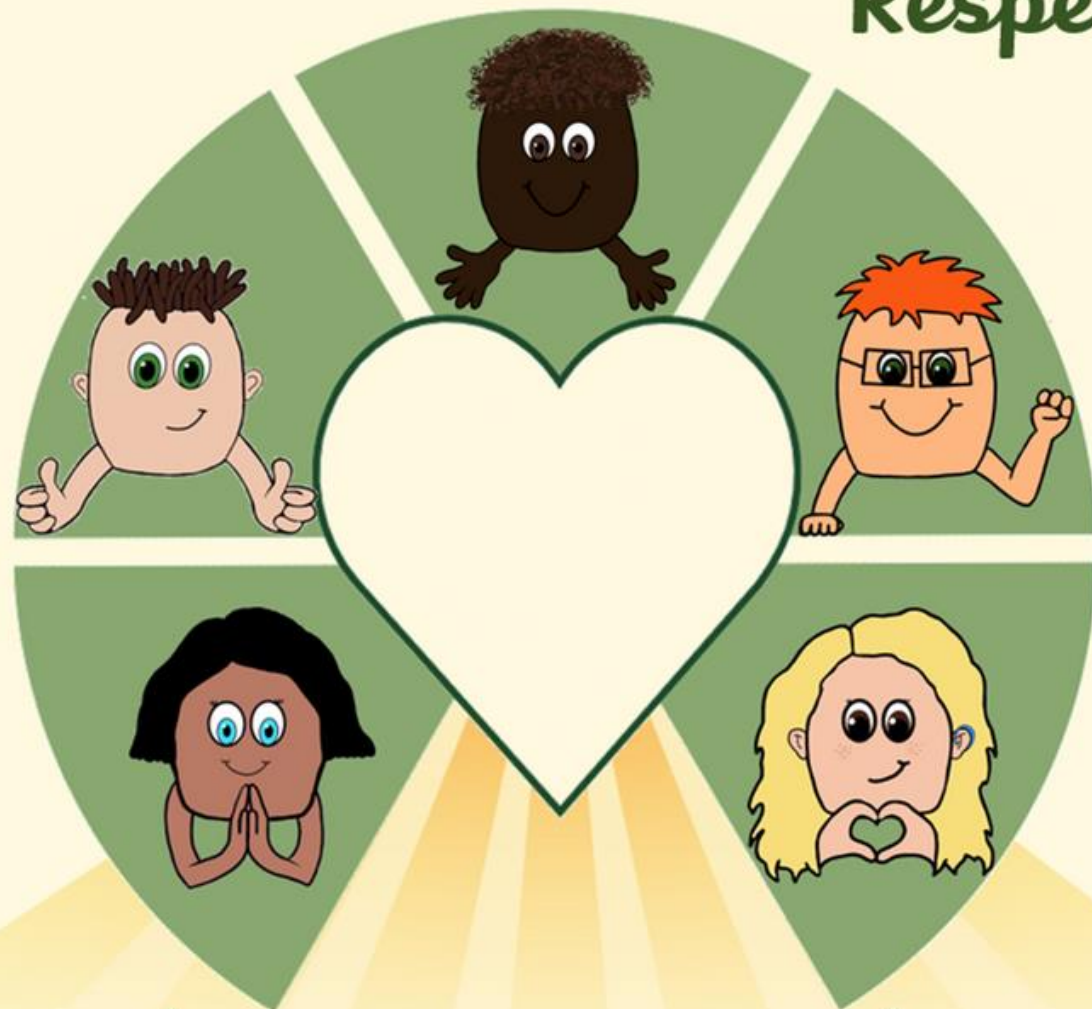


St. Anne's Values

Ralph
Respect



Iggy
Inclusivity



Peter
Perseverance

Finley
Forgiveness

Kitty
Kindness

We know we are loved



HERE'S THE IMPACT OF READING 20 MINUTES PER DAY!

A student who reads

20:00

minutes per day

A student who reads

5:00

minutes per day

A student who reads

1:00

minute per day

will be exposed to
1.8 MILLION
words per year
and scores in
90th PERCENTILE
on standardized tests

will be exposed to
282,000
words per year
and scores in
50th PERCENTILE
on standardized tests

will be exposed to
8,000
words per year
and scores in
10th PERCENTILE
on standardized tests

At St. Anne's we promote reading through everything we do. We provide regular opportunities for the children to read throughout the school day and we also expect the children to read daily at home.

These are some of the main reasons why:

1. Reading helps build communication skills
2. Reading opens the imagination
3. Reading has a positive impact on progress at school
4. Reading can improve mental health and wellbeing
5. Reading is a fundamental life skill

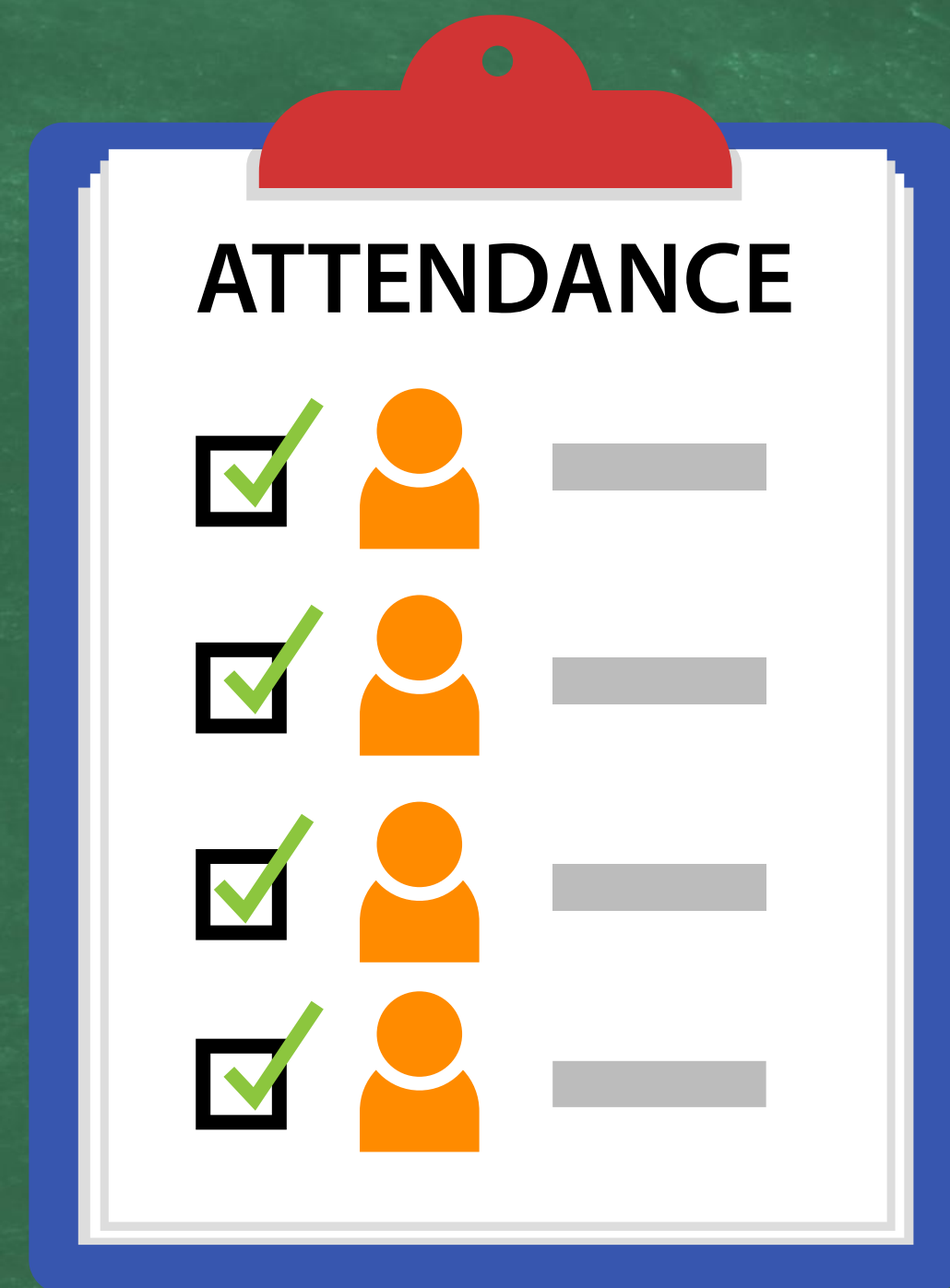
What are the risks of missing school?

Every moment in school counts, and days missed add up quickly. For example, a child in Year 2 who is absent for three days over a half term could miss 15 lessons in total.

The higher a pupil's attendance, the more they are likely to learn, and the better they are likely to perform in exams and formal assessments.

Data from 2022 shows that 84% of Key Stage 2 pupils who had 100% attendance achieved the expected standard, compared to 40% of pupils who were persistently absent across the key stage.

Not only that it helps them make firm bonds with staff and friends. By missing school especially for a significant period these interactions are paused which does not make for the best relationships long term.



Gates open - 8:35



We had a real push on great attendance last year. Class and individual rewards were given to those with great attendance. However, many letters of warnings were issued for persistent absence (lower than 90%). Alongside this 24 penalty notices for taking children out of school for 5 or more days without notice and/or without authorisation.

What can you do to help?

Notify the school of an absence immediately and this should be each day unless you have notified of specific dates. It is a safeguarding matter if a child is off school, and we do not have a reason or are able to contact parents – expect a home visit. Give a full reason for the absence so it can be coded properly. This is important because the code can affect your child's overall percentage.

Encourage your children into school as much as possible – we will let you know if we think they are not well enough to be in school.

Gates Closed - 8:50





Keep children off when it is specific things that can spread, e.g. sickness and diarrhoea, chicken pox etc.



Once treated, children with head lice can return to school as normal this can be the same day. Really do think if it is necessary to take your child on holiday or to see relatives abroad in term time. Get in touch if you are ever unsure to keep your child off or not. If you need any support with attendance or punctuality, get in touch.





RE Newsletter

Autumn 1 - Creation and Covenant

New Religious Education Directory



The new model curriculum has six components - branches. A new branch will be taught each half-term. Each branch has a core theme and invites pupils to learn about an aspect of Revelation, Scripture, life in Christ, and life in the Church, and to discern what their learning means academically and experientially enabling them to see, judge, and act through a deeper knowledge of the Christian faith.

Creation and Covenant

In this branch, pupils will encounter the God who creates and calls a people. They will explore revelation of the Christian belief that all that is comes from God, the Creation accounts in Genesis, and scientific explanations of the process of Creation. They will explore the call of God and his covenantal relationship with his people first through Abraham and Moses, then through the narrative of the Old Testament.

Catholic Social Teaching at St Anne's

All of the pupils at St Anne's have been introduced to the CST principles. We will be focusing on one principle per week and celebrating this during our Celebration Assemblies on Fridays. Scan the QR code to learn more.

Key Liturgical Dates

- ✿ Nativity of Mary, Feast 8/9/2024
- ✿ New Academic Year School Mass 12/9/2024
- ✿ Month of the Rosary October
- ✿ Our Lady of the Rosary 7/10/2024

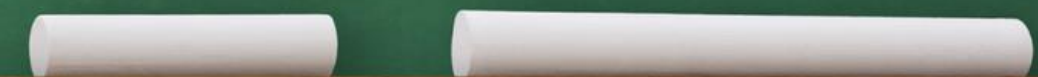
At Home

The children at St Anne's will be receiving Prayer Booklets to take home. These booklets contain the prayers that the New Religious Education Directory have stated will need to be know in each year group. We will be inviting the children to join in with all our prayer opportunities. Each pupil has received an RE Knowledge Organiser to support with their learning. Spend some time going through these with your child / children.



Zones of Regulation

Blue Zone	Green Zone	Yellow Zone	Red Zone
Sad - Bored Tired - Sick	Happy - Focused Calm - Proud	Worried - Frustrated Silly - Excited	Overjoyed/Elated Panicked - Angry - Terrified



St. Anne's Safeguarding Team

Carmel Martin
Head of School



Rachel Lewthwaite
SENDCo



Caitlin Dorgan
Mental Health/EAL Lead
and DSL



Niamh Burke
Home School Link Worker



Claire Alba
After School Club Manager



James Kibble
CEO Xavier CET



Anne Halliday
CET Safeguarding
Compliance Director



Sean Cassidy
Assistant Headteacher



Fran Dyer
Breakfast Club Manager

Thank you

We look forward to working
alongside you to ensure a
fantastic Year ahead for all the
children.

Any Questions?

