



St. Anne's Gazette

Free Prae Road, Chertsey, Surrey KT16 8ET
Headteacher: Mrs L M Harris

April 2024

Dear Parents,

I hope your Easter holidays were restful and you made the most of those sunny days.

It has been great to get back to it and the highlight has certainly been having our hall back. We have forgotten already what it was like not to have it and difficult to understand how we coped - but we did.

For me the biggest benefit is being able to come together as a whole school. It has been lovely and I look forward to sharing more and more with everyone together. This week, we had our first class assembly which was great and even better that reception and KS1 get to see what the older children have been learning.

On a similar theme it has been wonderful seeing the older children interacting, caring and supporting the younger children during family dining. There have been so many really lovely moments. For example - a year 5 boy cheering for a Year 1 child who received a headteacher's award because he was 'in his family'. We're also aware that family dining has been a big change and I met with the Pupil Voice just this week to see how they felt and what changes we can make. From that we are looking at a 'Fluid Friday' where children can choose where they sit and giving Y3 and Y4 opportunity to take on some of the lunchtime responsibilities - we will see how it goes.

Finally, I want to give Mr Cassidy a big shout out - it is like he has been with us forever. He is already a great asset and I know will bring a lot to our school community.



It is with great pleasure that we extend a warm welcome to our new Assistant Headteacher, **Mr Cassidy**. We are delighted to have him join our school community.

As Mr Cassidy embarks on this new journey with us, we look forward to the fresh perspectives and innovative ideas he will bring to St. Anne's.

Once again, welcome aboard! We are confident that with your support, our school will continue to be a place where learning is cherished and every day is an adventure in education.

Rosary

As you know, we celebrate the months of **October** and **May** by praying the Rosary together.

We are delighted to be able to invite you once again to remember **Our Lady**.

This May, we warmly invite anyone who would like to say a decade of the Rosary together at **8.45am** at the front of school.



The Rosary will be led by either the Prayer and Liturgy Council or members of staff. We have an abundance of rosaries if you do not have one.

It is a lovely way to start the day and a good time for some quiet before the new day begins.

We warmly welcome as many of you as possible to join us in this special prayer time. Please do not worry if you do not know what to say, it is all about coming together during this month and pausing to reflect as a community.

May Procession - The Month of Mary

To further highlight to the whole school community the significance of May being the month dedicated to **Our Lady**, we will be having a procession for **Mary** at the end of May.

During this procession, the school will gather on the field to celebrate a liturgy with songs and prayers for **Mary**. This will be a beautiful way to celebrate **Our Lady**.

We invite anyone who would like to come for a reflection on the field at the end of the school day.

God Bless,

Mrs Kemp-Smith

New Hall

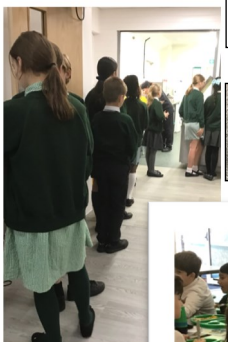
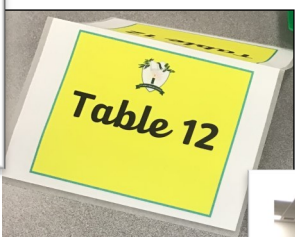
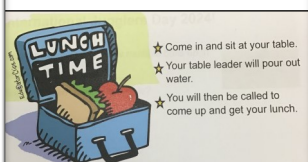
Family Dining

Our new family dining is going very well, the children have quickly settled into the routine. Reception children have a sitting on their own, where staff are on hand to support with the adjustment from eating in class to having lunch in a new larger space.

We believe this new system will have the following benefits for the children:

- Encourage a positive dining experience where the children support one another.
- Improve table manners and use of cutlery.
- Encourage children to take time to eat and socialise with peers.
- It will make lunchtime much calmer and alleviate queuing.

We are already seeing the benefits. The older children on the table are loving helping the younger children with setting the table, showing them how to cut their food and helping them clear away.



Celebration Assemblies

We held our first Celebration Assembly last Friday in the hall. It was so nice to finally have everyone together, all sitting comfortably with plenty of room. The Y6 children even had the privilege of sitting in the fabulous tiered seating.

To test out our new audio/visual system, the celebration PowerPoint had lots of fun songs, I'm sure the children came home singing some of them!



Buy A Brick

Our first round of bricks have been installed in the new hall and they look fabulous. It is not too late if you would like to be part of our St Anne's Family wall. We will continue to add bricks ordered. The next bricks we will



endeavour to order and install before the current year 6 leavers events. **Please submit your orders by Sunday 2nd June 2024** to allow us to order and install in time.

To order - please complete this form (<https://forms.office.com/e/PNmjuCbTzY>) making sure you do not exceed 16 characters per line including spaces and punctuation and you do not include emojis.

Surrey Adult Learning has many courses available to support parents in Surrey.

Topics include mental health, supporting children who have English as an Additional Language (EAL), supporting learning, healthy living, neurodiversity and many more.

Courses are held online and can be accessed via this link: <https://www.surreycc.gov.uk/schools-and-learning/adult-learning/courses/search?keyword=family+learning+&category=FAMLRN&page=2>

PFA Help Request



We are looking for donations of clip coat hangers for trousers, to use for the donated uniform.

If you have any please can we ask you pop them in the uniform bin at the front of school.

Thank you!

SAVE THE DATE !

FRIDAY
7th JUNE 2024

PUB

QUIZ

★
★
★
★

QUIZ ★ GAMES ★ RAFFLE ★ PRIZES

TICKETS ON SALE SOON

VENUE:

ST ANNE'S NEW SCHOOL HALL

TIMINGS:

7PM DOORS OPEN
QUIZ STARTS 7.30PM
LAST ORDERS 10.30PM
DOOR CLOSING 11.00PM

ENTRY FEE:

£5 PER PERSON OR
£30 TEAM OF 6

All money raised will be going towards our wonderful year 6 children for their leaver's celebrations.

Safeguarding

We know this time of year can put pressure on families and loved ones. For that reason we just wanted to draw your attention to some websites and resources that may come in helpful now and in the future:

Family Lives – very useful parental information website, provides lots of links and resources - they also have a telephone support line for parents/carers

[Parenting and Family Support - Family Lives \(Parentline Plus\)](#)

Mental Health support – suitable for lots of families, especially at this time of year

[Mental health support - Surrey County Council \(surreycc.gov.uk\)](#)

NHS Talking Therapies – it may be helpful for any parents to be able to talk to someone and this is a self referral service Home

[Mind Matters Surrey - NHS Talking Therapies \(mindmattersnhs.co.uk\)](#)

Family Conflict – SCC pages for parents

[Our resources for reducing conflict between parents - Surrey County Council \(surreycc.gov.uk\)](#)

Your Sanctuary – Domestic Abuse Support - Services

[YS Home \(yoursanctuary.org.uk\)](#)

Relate – resources for relationships –

[Get Help | Relate](#)

[Find your online centre | Relate](#)

Drug and Alcohol Support Services

[i-access Drug & Alcohol Service : Surrey and Borders Partnership NHS Foundation Trust \(surreydrugandalcohol.com\)](#)

Catalyst – substance and mental health support

[Mental Health and Drug and Alcohol Service in Surrey \(catalystsupport.org.uk\)](#)

Citizens Advice – another more general link but useful for newsletters at this time of year

[Citizens Advice](#)

Family Information Service – Families can search for services near to them

[Family Information Service - Surrey County Council \(surreycc.gov.uk\)](#)

Online Understanding your child guides – Free for all Surrey residents – use access code ACORN.

[Online Learning \(heiapply.com\)](#)

As a safeguarding team we are always here to support, to be a listening ear, and guide in anyway you feel appropriate. Do get in touch with any member of the team via phone or email. (DSL@stannes-chertsey.surrey.sch.uk)

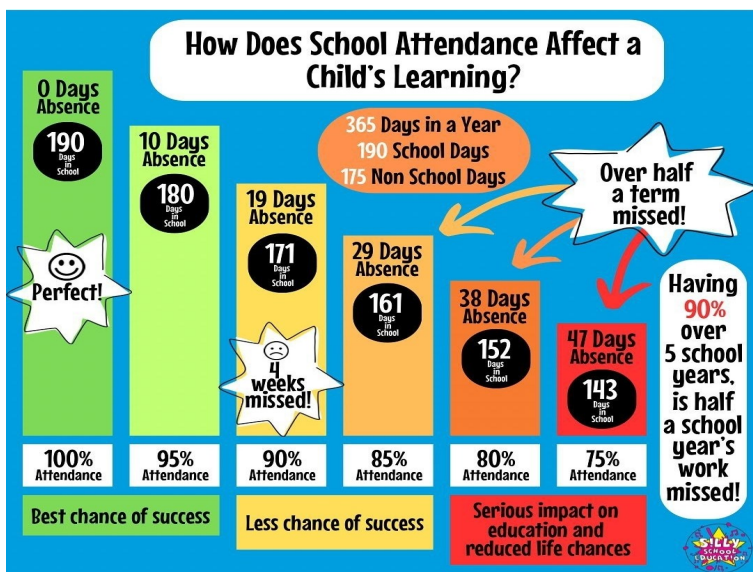
You are not on your own and many individuals or families do come and ask.

**Miss Dorgan, Mrs Harris, Mrs Burke,
Mrs Lewthwaite, Miss Lawrence, Ms Alba, Mrs Dyer**

Attendance and Punctuality

School attendance and punctuality is very important to how successful your child can be at school. (See graphic below) You will have heard in the press that the government are looking at tackling attendance but at St Anne's we have been trying to do this for some time. On the whole the majority of parents are great at getting their children into school and on time. Some however can struggle for a variety of reasons and this cannot be overlooked.

A child is classed as persistently absent from school if they fall below 90% attendance. In a whole year 90% is 4 weeks of absence, that is a lot of learning missed, and it does equate to your child being less successful than others.



We're not saying if your child is poorly they should be in school, we're not. What we ask is that as much as possible you encourage your children into school.

We also ask that you give us enough detail to note with their absence. It is not enough to say they are poorly. We need to know what the reason is so it can be coded appropriately, we can offer appropriate support and we can answer any questions asked of us by the local authority or Ofsted.


Some of you will have received letters to say that your child's attendance has dropped below 95% or you need to offer medical evidence if your child is off sick again. Please take these letters as they are meant which is to try and prompt you to do your best, to encourage your children into school and avoid any additional absence such as family holidays.

At a recent meeting with the local authority it was commented that we had issued a number of fines to our parents. This is not done lightly, we don't receive a penny of it, but it is the only deterrent we have to avoid parents taking their children out of school. And as you may have heard in the press this is going to be going up from £60 to £80. So please bear this in mind.

Finally, we do try and do our bit to reward good and improved attendance with certificates and extra playtimes but the reality is, that at this age, it is the parents who can make the biggest difference to the children's attendance and therefore their success.


Class Attendance - March 2024

EYFS & KS1

	%
Sunshine 	98
Rainbow	95
Ladybird	96
Bumblebee	96
Squirrel	97
Hedgehog	94



KS2

	%
Monet 	98
Delaunay	97
Tolkien	97
Rowling	96
Earhart	97
Fiennes	95
Einstein 	98
Somerville	95

EYFS 96

KS1 96

KS2 96

Overall, attendance was higher for March. **Congratulations to Sunshine, Monet & Einstein Classes**, for the highest attendance figures for March.

Many thanks for your cooperation.

Dear Lord,

May Christ be at the centre of all we do.

With your help, fill our school with laughter and learning.

With your guidance, help us listen and respect each other, no matter our differences.

With your love, encourage us to be kind and gentle.

With your light, shine on our school family, so we can be a light for others.

We are all part of St Anne's community and we know that we are loved.

Amen



Please click on the link below, to find the latest Parish Newsletter
[St. Anne's Parish Newsletter](#)

May 2024		Important information: KS2 SATS Rosary before school every day for pupils and parents				
Sun	Mon	Tue	Wed	Thu	Fri	Sat
			1	2	3 Coffee Morning – straight after drop off	4
5	6 Bank Holiday	7 EYFS Bocketts Farm Trip Dog Safety Workshops	8	9	10	11
12	13 KS2 SATS Week 3D Assembly	14 Y4 Victorian Day	15	16	17	18
19	20 Reconciliation/Anointing of the sick topic begins 3M Assembly Year 6 Bikeability Level 2	21	22	23	24 Year 1 Space Day	25
26	27	28	29	30	31	
May Half Term 27 th May – 31 st May						

Thank you all, once again, for your support and co-operation.

Yours sincerely

A handwritten signature in black ink that reads 'Harris'.

Mrs L M Harris
Headteacher

SCHOOL CLOSURE DATES
Monday, 6th May - Bank Holiday



**EAT WELL
SPEND LESS**



Learn how to cook and eat healthily on a budget

Learn new skills - cooking from scratch, meal planning and budgeting. Recipes from soup to cookies - for free!



Join us on Thursdays from 9th May 10am
- 12.30pm

For 6 weeks with a break for half term on 30th May

**The Beacon, 94 Guildford Street
Chertsey, KT16 9AS**

Contact Helen Bunclark

Eatwellspendless@runnymede.foodbank.org.uk

or Runnymede foodbank 01932 943056

for more details and to book a place

