

**Year 2 Homework. Handed out Monday 8<sup>th</sup> January. Due Monday 15<sup>th</sup> January**

Welcome back! We hope you have all enjoyed a happy Christmas and we wish you all the best for the coming year. Many thanks for all your kind wishes and Christmas gifts – it is very humbling to receive these and we do appreciate your kindness. Thank you.

**Diary Dates:**

PE on Thursdays. Children come to school in PE kit and no earrings / jewellery please.

Monday 5<sup>th</sup> February – Year 2 Great Fire of London Day

Tuesday 6<sup>th</sup> & Wednesday 7<sup>th</sup> February – Parents' meetings

Friday 9<sup>th</sup> February – INSET Day

Monday 12<sup>th</sup> – Friday 16<sup>th</sup> February – Half Term break

Monday 19<sup>th</sup> February – back to school.

This week in English, we will:

- begin our new text, Usborne's The Great Fire of London
- describe the setting of London before the Great Fire using commas in lists
- write a diary entry
- answer questions using the text

This week in Maths, we will:

- recognise £ and p coins and notes
- count £ and p
- make the same amount of money in different ways

**Spellings:**

These are the spellings we will be focusing on this week – words where the 'y' makes the 'igh' sound.

A spelling shed assignment has been created. Children should practise spelling these words at home on spelling shed a few times a week until they are mostly confident that they can spell them correctly from memory. We will not be having a written weekly spelling test and will instead monitor the data we are given from Spelling Shed to assess how children are progressing with their spellings. Please turn over for the spellings.

cry  
fly  
dry  
try  
reply  
July  
shy  
spy  
sky  
why

**CHALLENGE:**

Can you use your spellings in sentences?

Have you used the words correctly?

Do your sentences make sense?

Year 2 Homework. Handed out Monday 8<sup>th</sup> January. Due Monday 15<sup>th</sup> January

**Maths Focus**

From now on, we will put in the Maths focus card on this homework letter in case your child forgets to stick it in the diary.

Counting on and back

Practise counting -

on and back in 2s to 30;

on and back in 5s to 100;

on and back in 10s from different start numbers – EG 20,  
34, 58, 64,

on and back in 3s to 36.

Say 1 more, 1 less than any number within 100.

**Reading:**

Boost is now working for children to access their weekly phonics book.

A new book has been assigned. Please use the same username and password as for Rocket Phonics Rising Stars.

Please read every night with an adult. Remember to do the AR quiz before changing your book. Children can change their book any day, as soon as they have read the book and completed the quiz.

Please enter the date and any reading completed into the reading diary. These will be checked weekly.

Weekly English/Maths Homework Task (30 minutes)

Please see attached

$$84 - 39 =$$

$$43 - 18 =$$

$$43 + 29 =$$

$$56 + 38 =$$

How much money is in each jar?



p



p

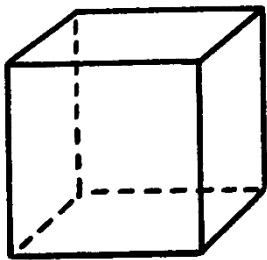


p

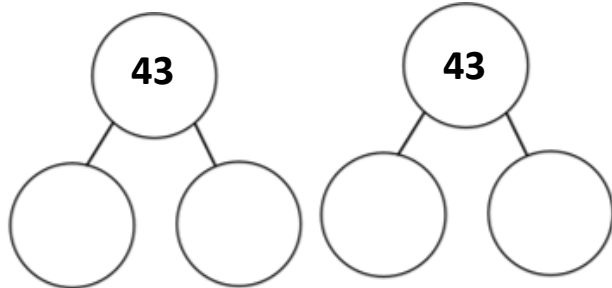
$5 + \text{-----} = 10$  so  
 $15 + \text{-----} = 20$

Double 8 =

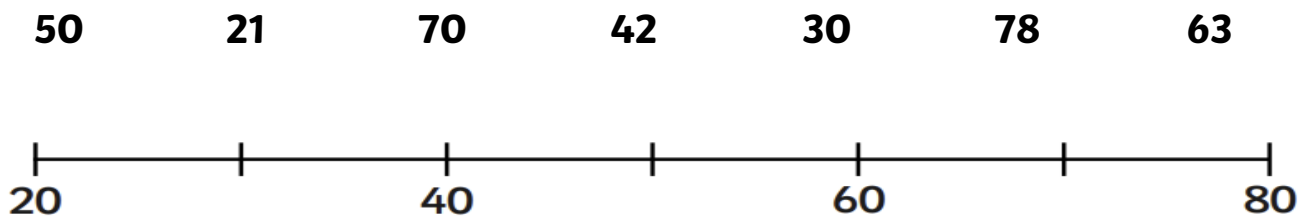
Find two ways of making 43.



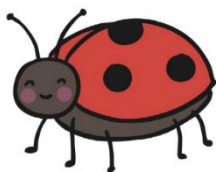
Name: -----  
 Faces: -----  
 Edges: -----  
 Vertices: -----



Draw arrows or label on the number line where these number should be.



There are 30 ladybirds in the garden. 12 fly away North and 9 fly away South. How many are left?



On Monday, I am given 25p. On Tuesday, I spent 13p. On Wednesday, I get given 45p. How much money do I have now?

