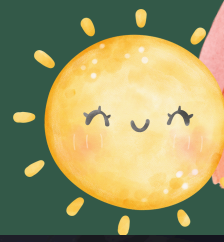


# Sunshine & Rainbow NEWSLETTER



30<sup>th</sup>  
January  
2026



## REMINDERS

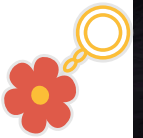


### Lip Balms

We have noticed that many children have been bringing lip balms into school and using them quite frequently throughout the day. It's lovely to see how keen they are to share things from home, but lip balms are often passed around between friends, which can be tricky when it comes to allergies and hygiene. They also cause upset when they go missing or are used by someone else. To help keep things calm and safe, we kindly ask that lip balms stay at home unless you've spoken with your child's class teacher. This also includes bracelets, watches and other small toys. Thank you for your support.

### Keyrings

We have also seen lots of children adding large keyrings to their school bags. While they are fun and full of personality, the bags are stored in trays during the day, and the larger keyrings make it difficult for the bags to fit. Children can also become upset if a keyring gets lost or broken. To avoid this, we gently ask that keyrings stay at home and are not brought into school. Thank you.



## **CONSENT REQUIRED -** **ST GEORGES COLLEGE, WEYBRIDGE**

In order for your child to attend, please  
provide consent here:

**CLICK HERE**



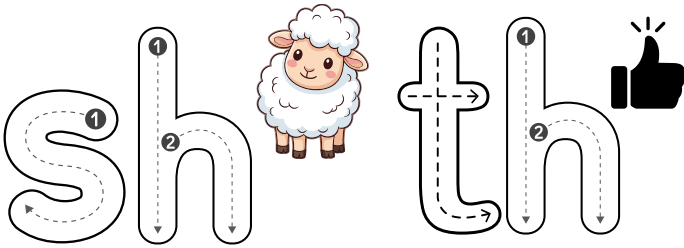
# Next week, we will be learning...

## LITERACY

In Phonics, we will be learning the sounds:

- 'sh' as in sheep
- 'th' as in thumb and feather

Please do spend some time looking at these in your phonics practise book.

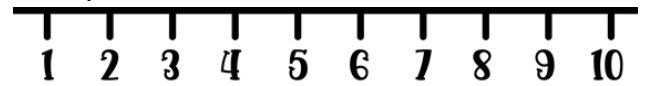


## MATHS

The children will be:

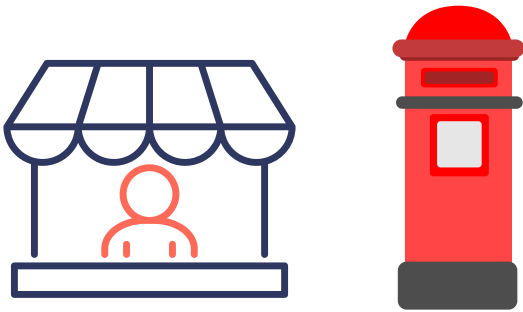
Learning about the numbers 6, 7 and 8:

- Counting to 6, 7, 8
- Cardinality to 8
- Counting different representations to 8.



## PERSONAL, SOCIAL AND EMOTIONAL DEVELOPMENT

We will be learning about the people in our community who help us: postal workers and shop keepers.



## RE

Galilee to Jerusalem

I know that Jesus takes care of everyone.



## UNDERSTANDING THE WORLD

This half term, our topic will be 'People Who Help Us!'

Next week, our focus will be on postal workers and shopkeepers.

- Writing letters to their friends
- Sticking the right amount of stamps to match the number
- Using scales to weigh the parcel
- Use loose parts to create items for the shop
- Writing a shopping list
- Creating price tags



Have a lovely weekend!